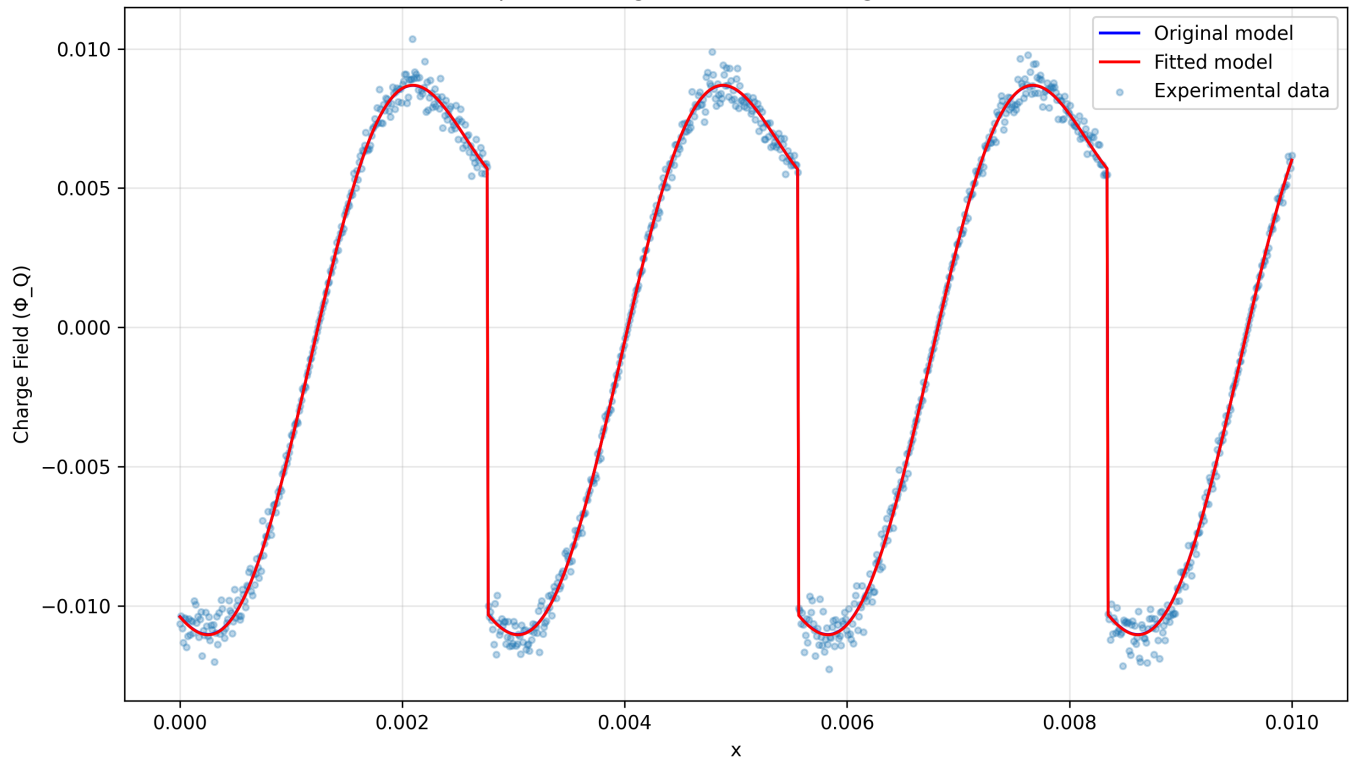
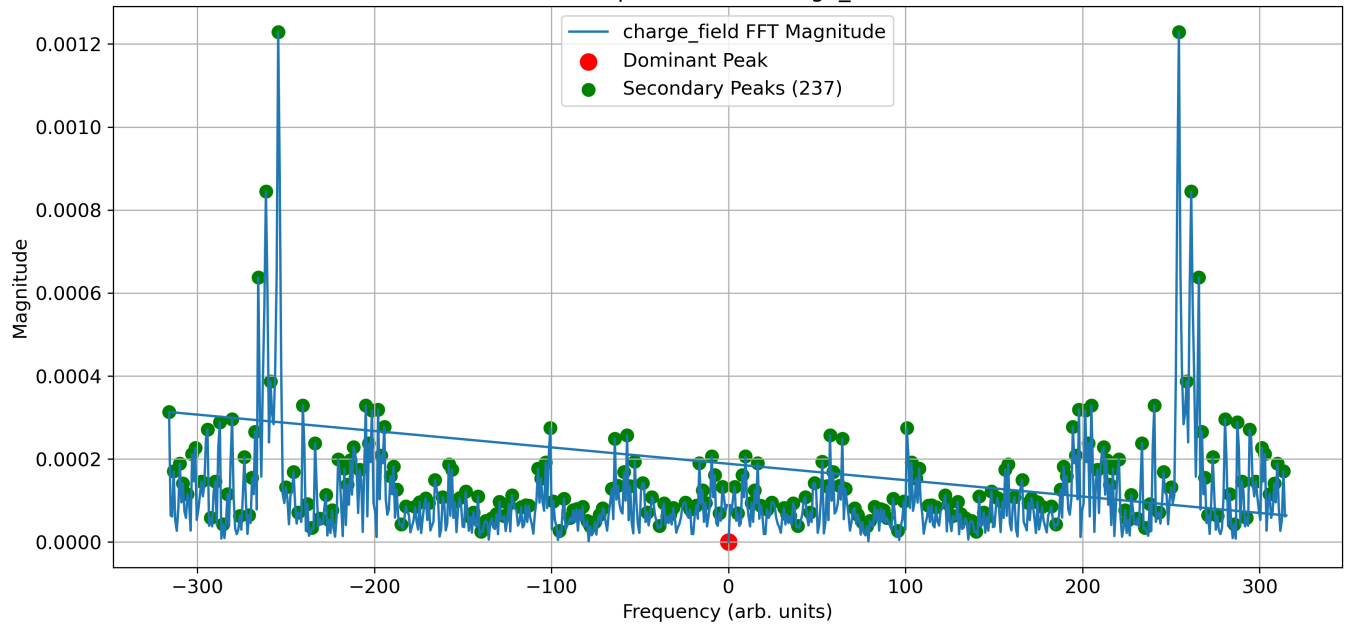


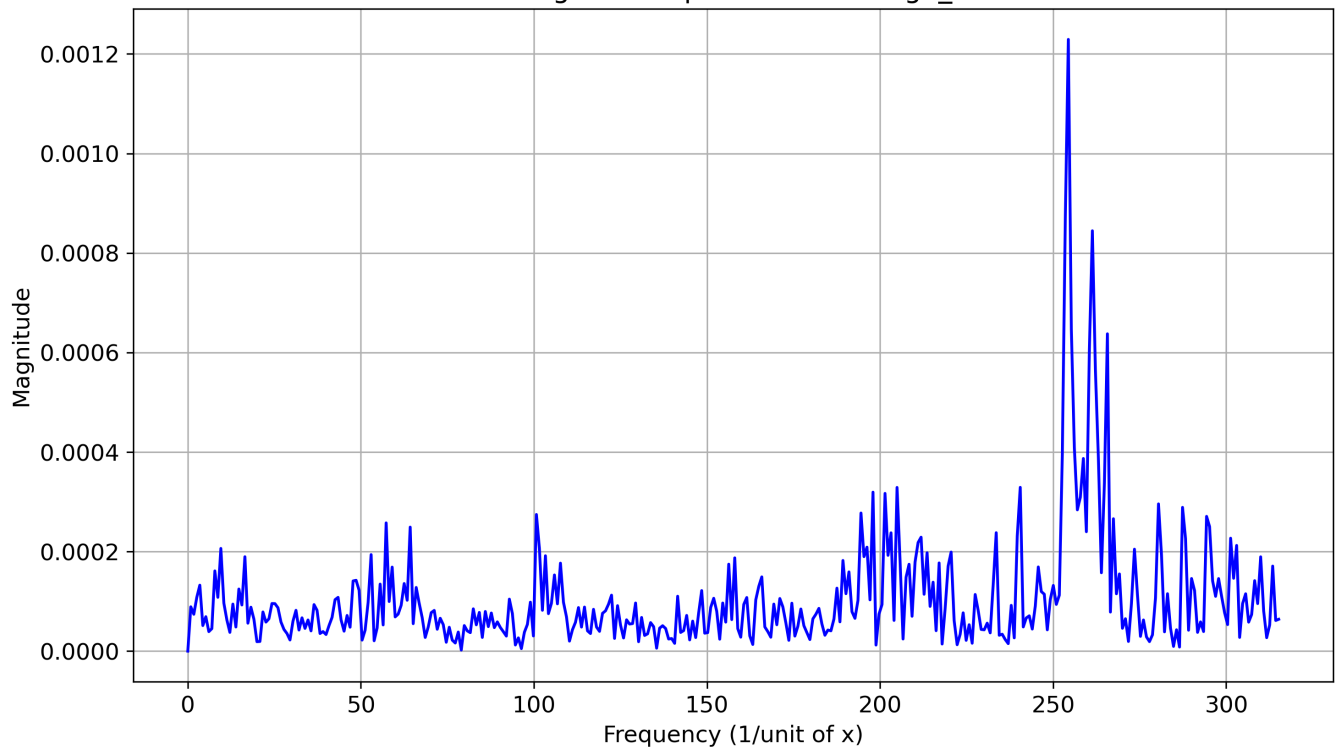
Comparison: Original vs. Fitted Charge Field Model

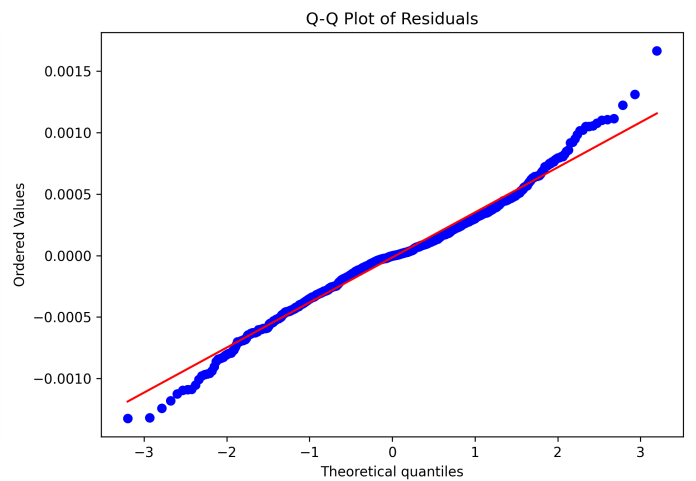
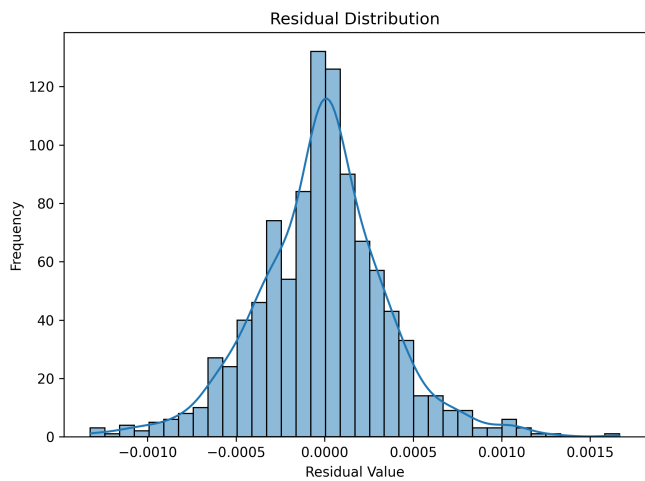
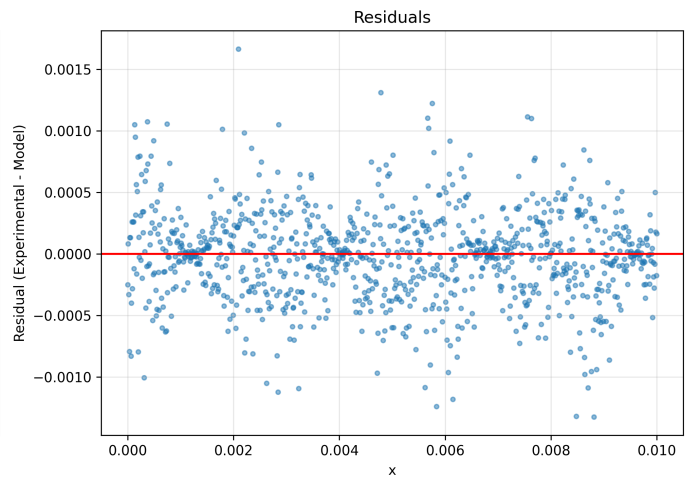
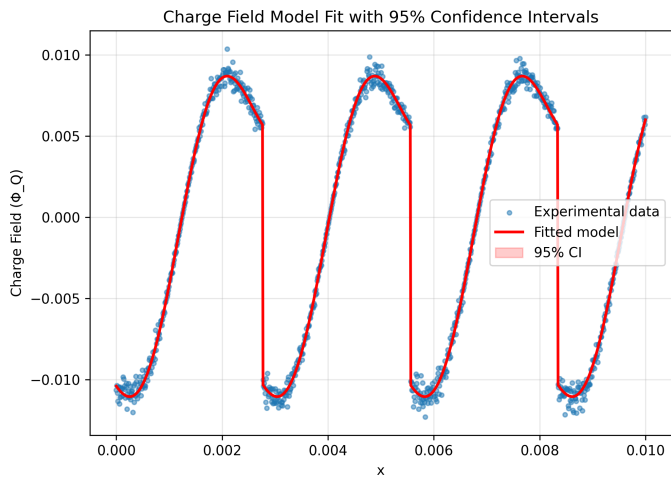


FFT Spectrum for charge_field

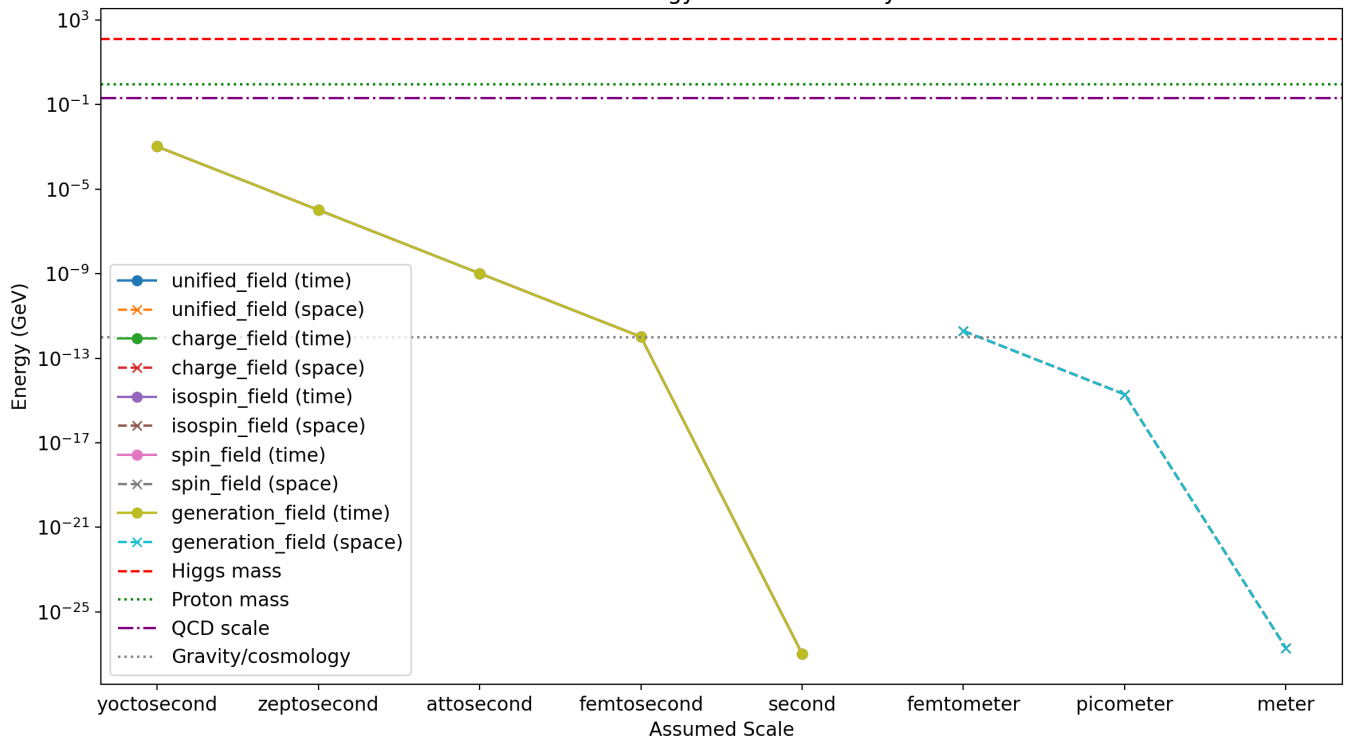


FFT Magnitude Spectrum of charge_field

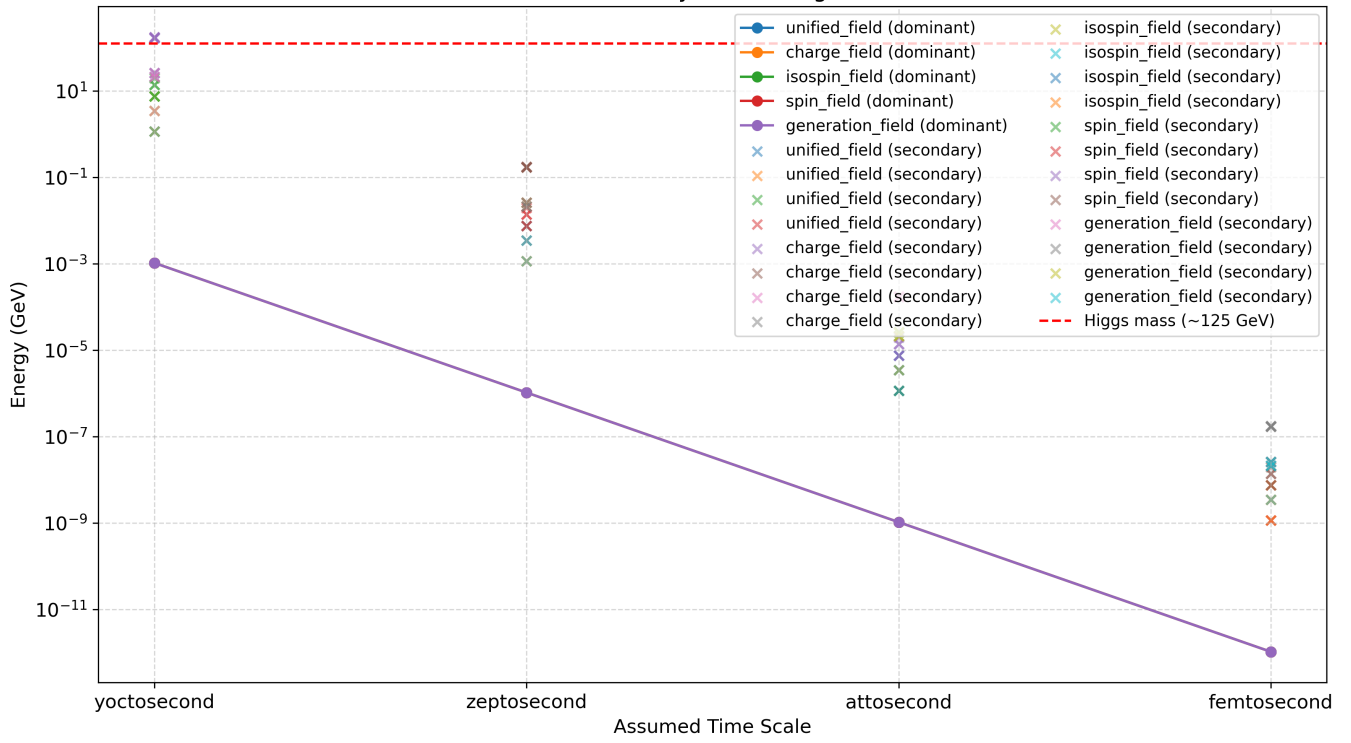




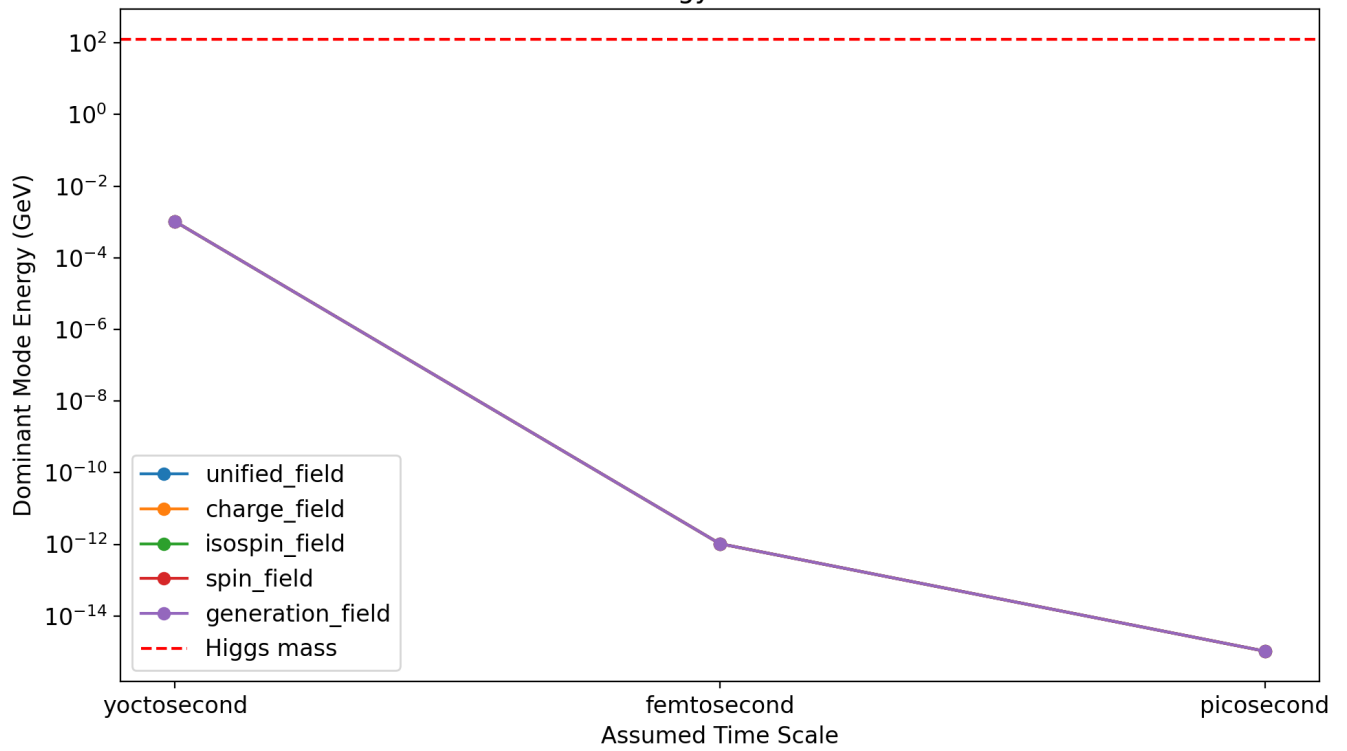
Dominant Mode Energy vs. Assumed Physical Scale

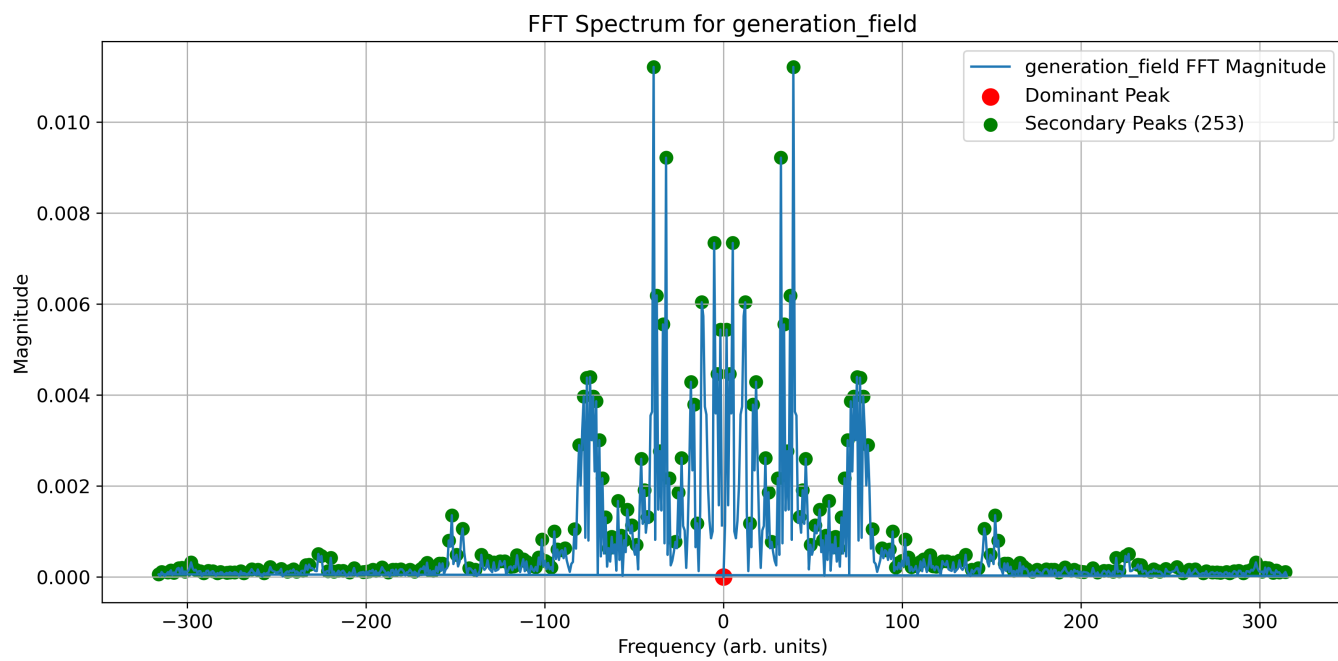


Dominant and Secondary Peak Energies vs Time Scale

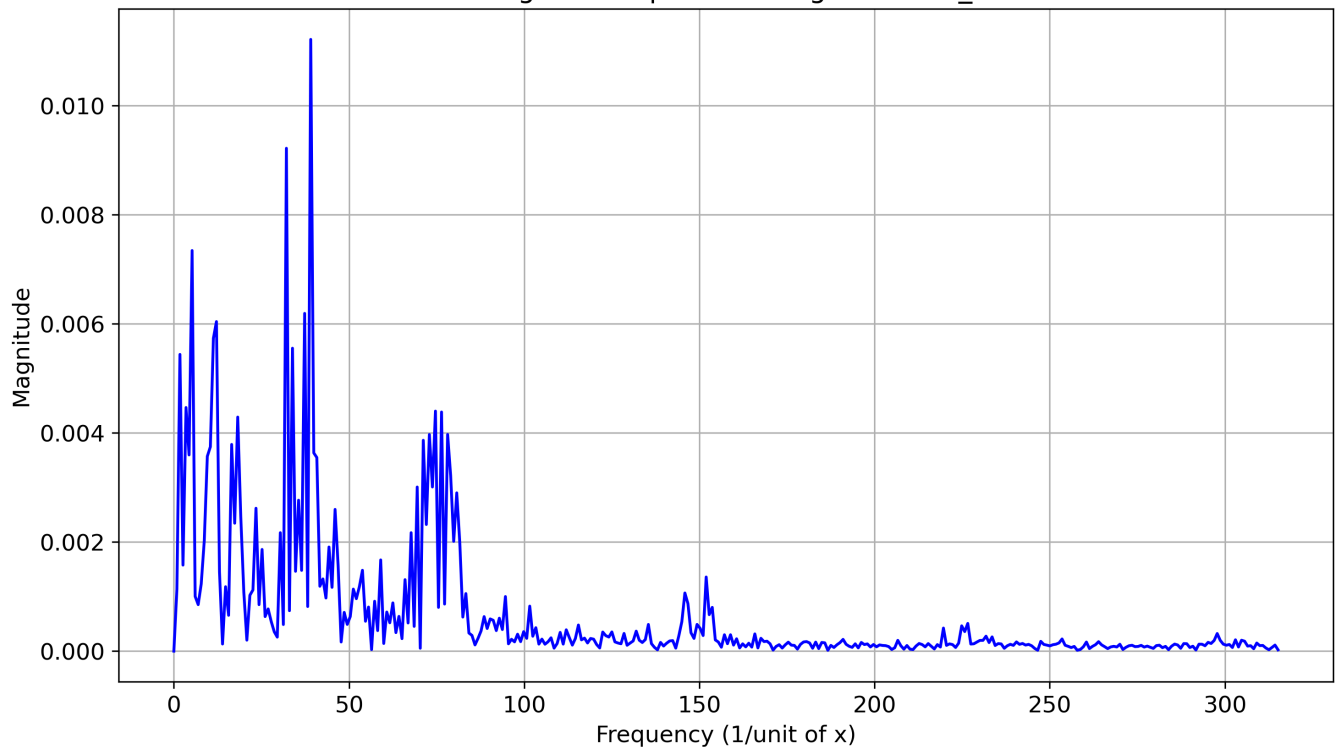


Dominant Mode Energy vs. Assumed Time Scale



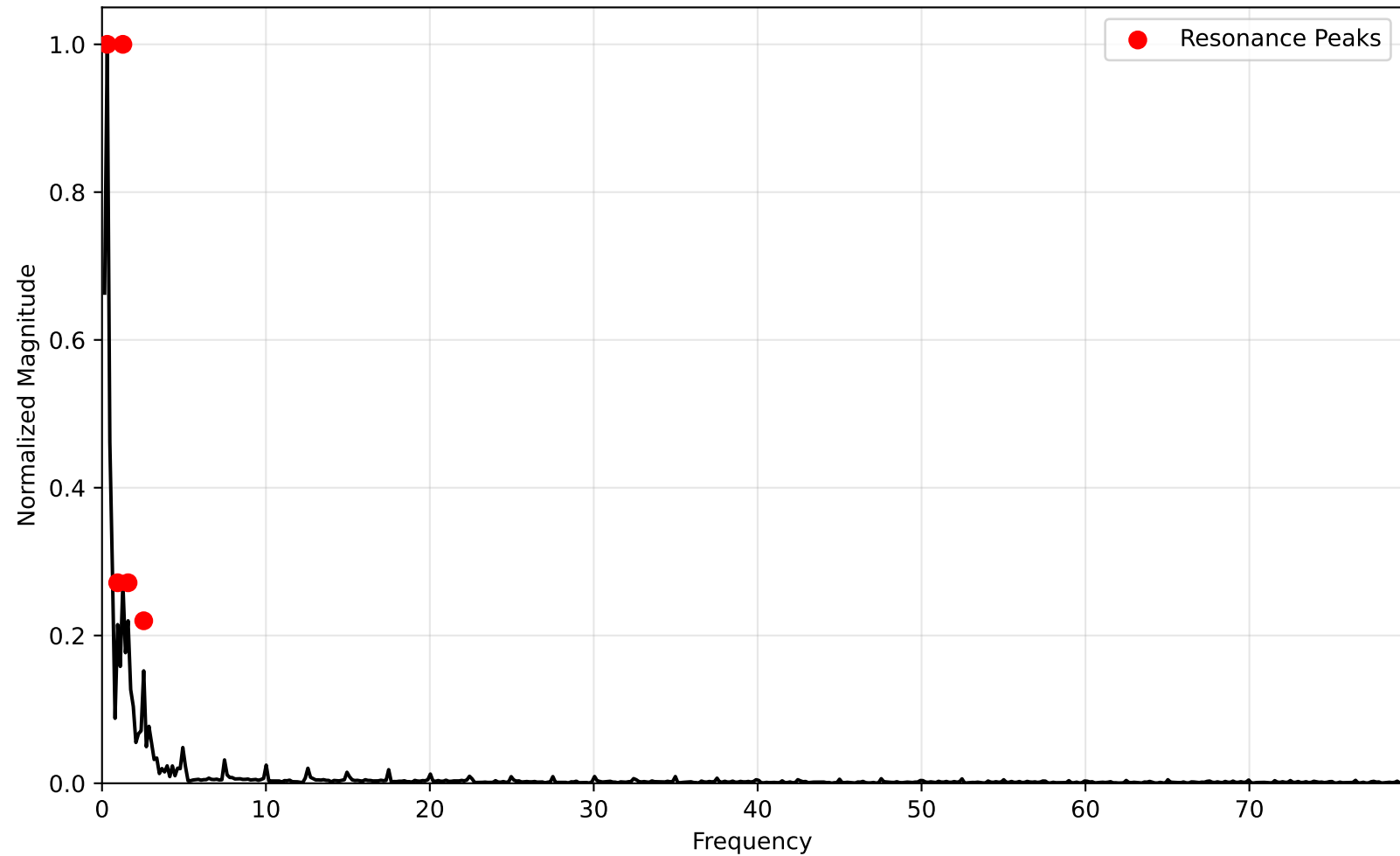


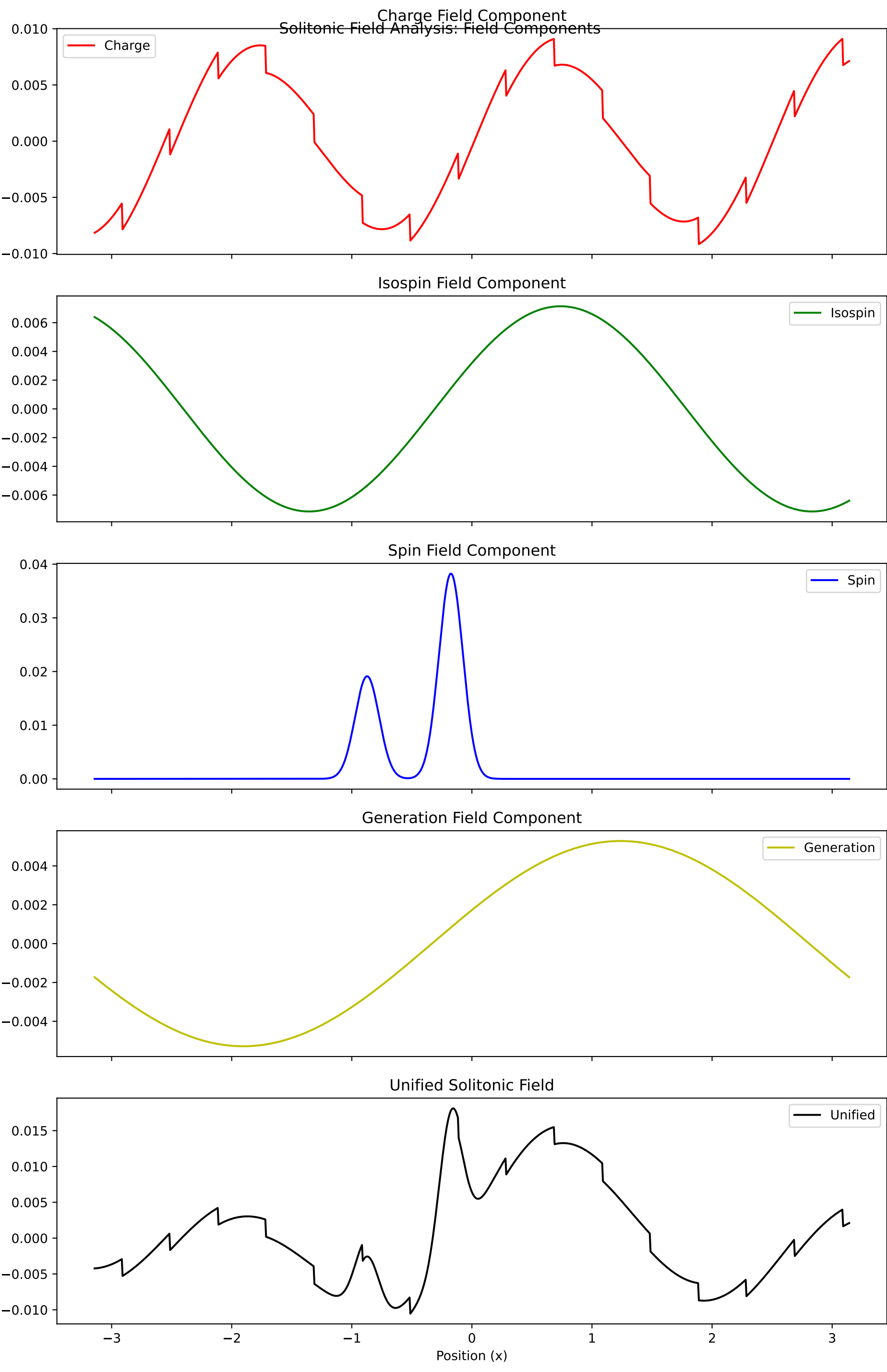
FFT Magnitude Spectrum of generation_field

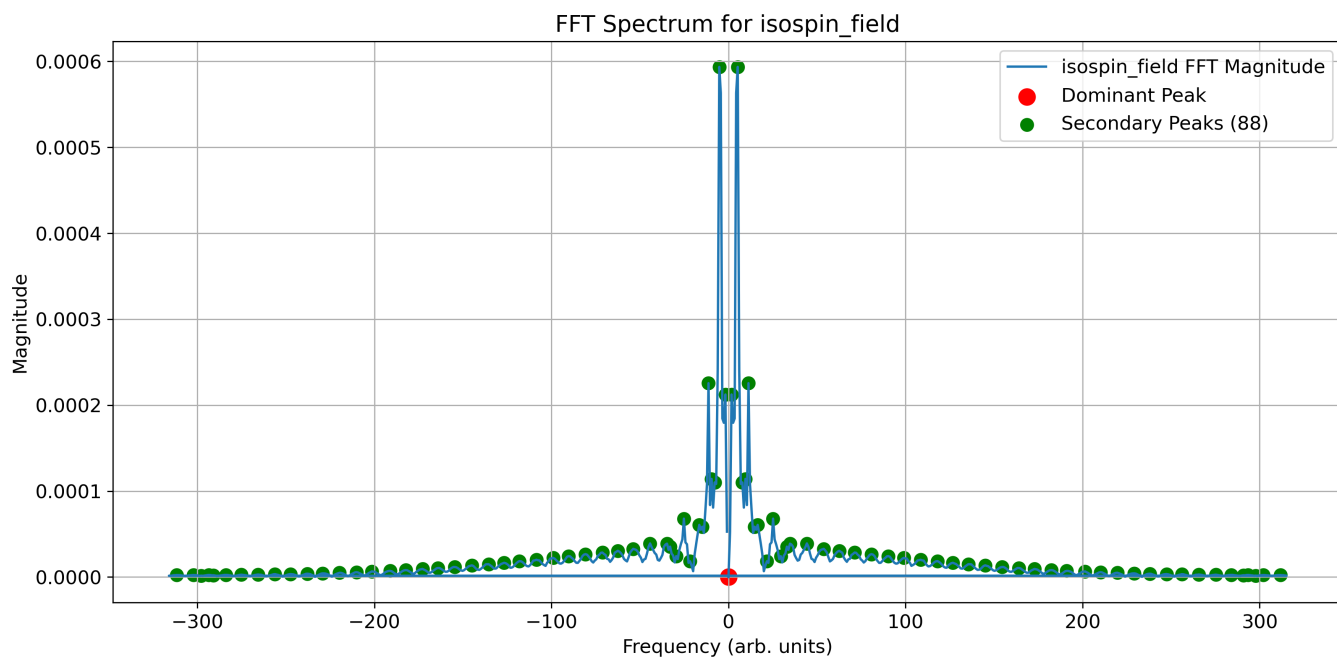


Solitonic Field Analysis: Fourier Spectrum

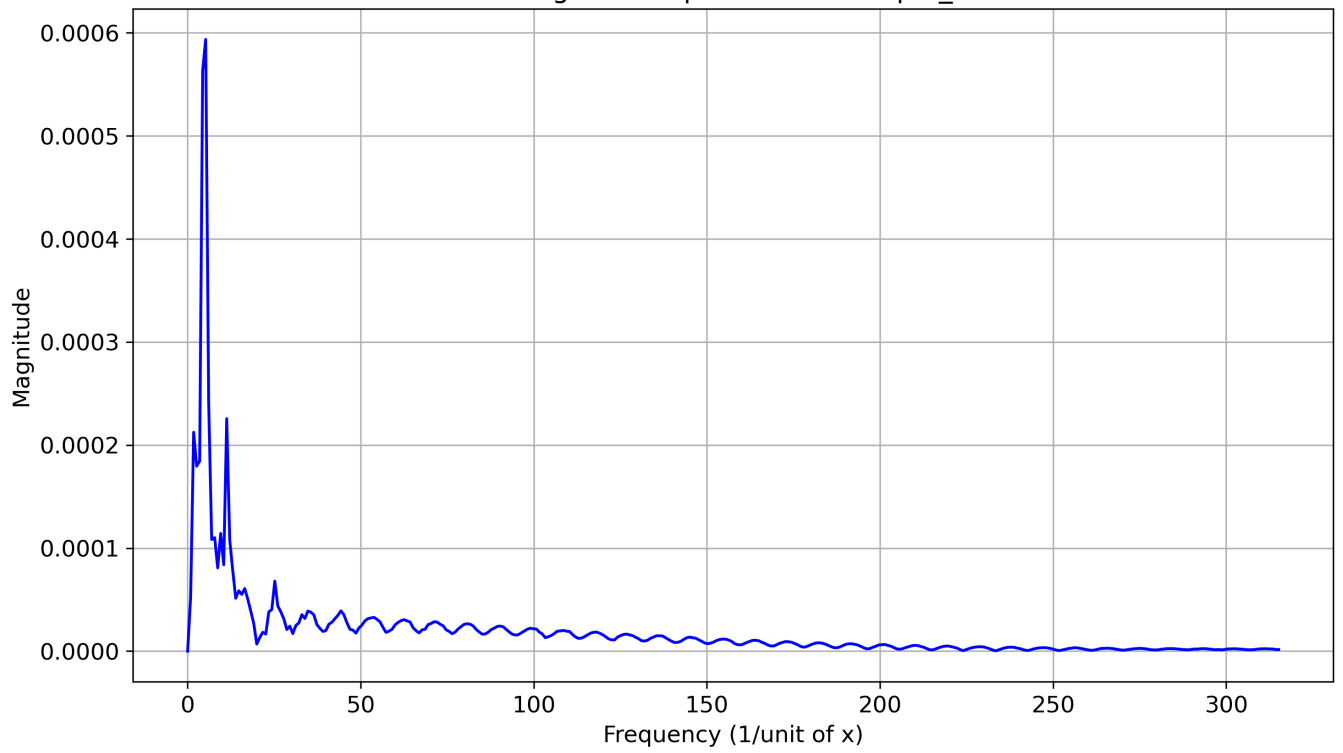
Fourier Spectrum of Unified Field



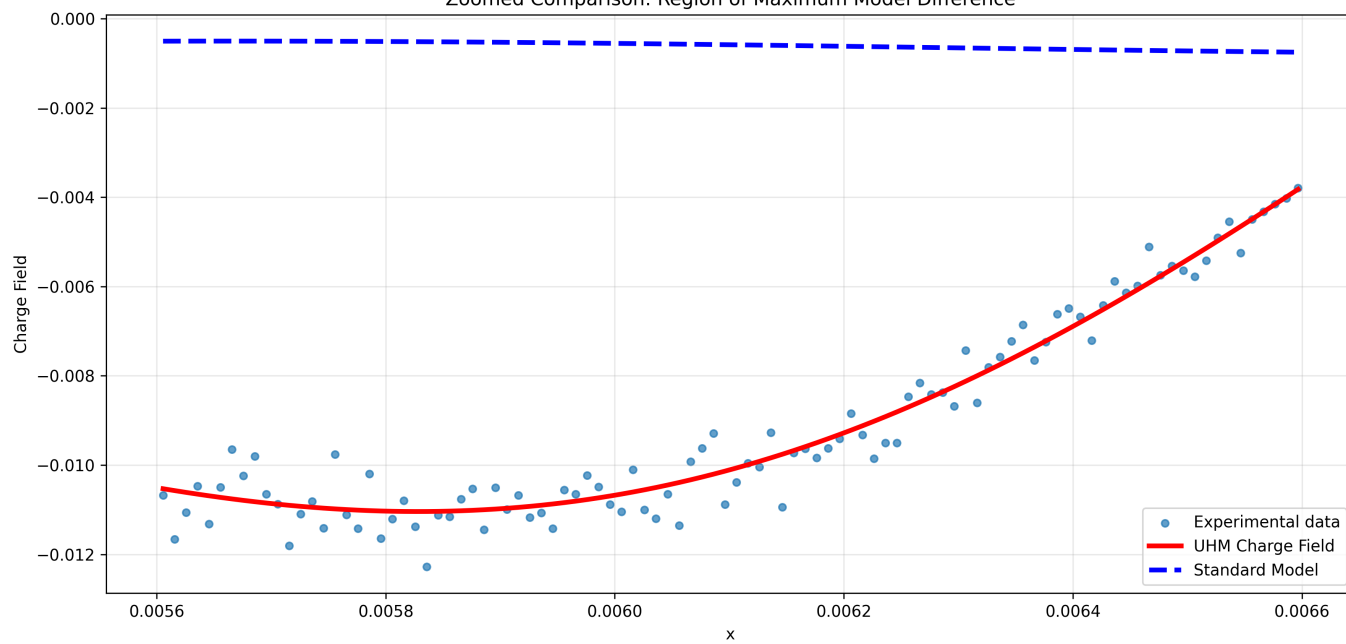


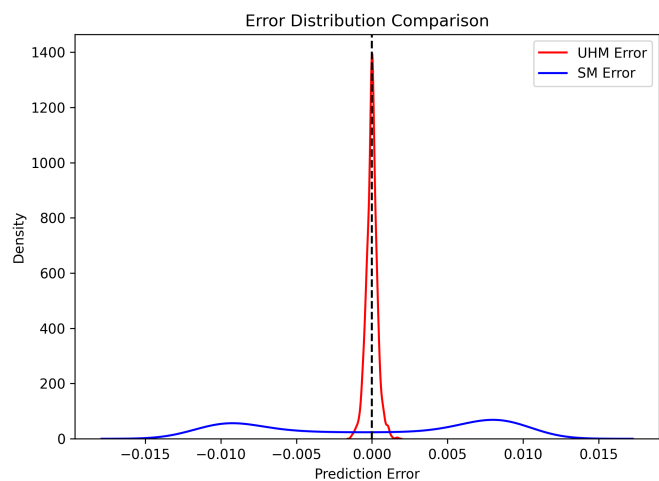
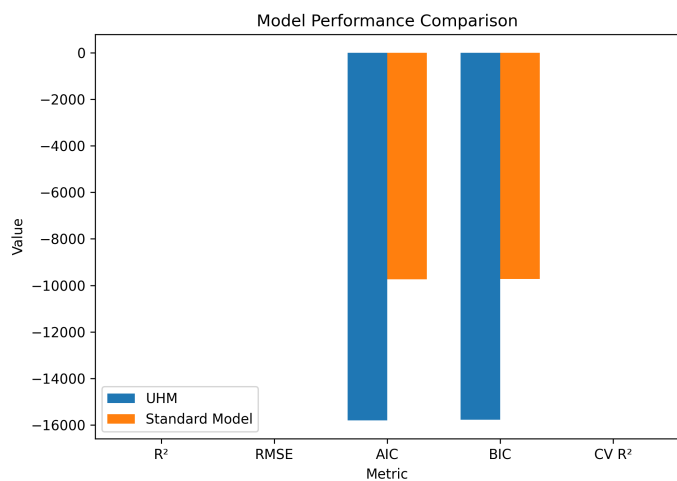
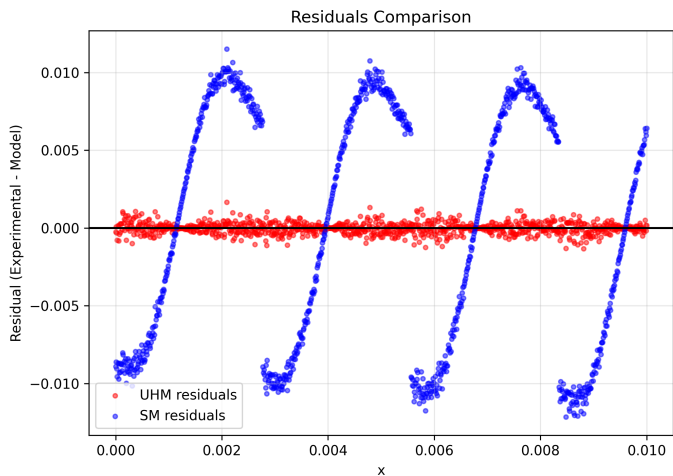
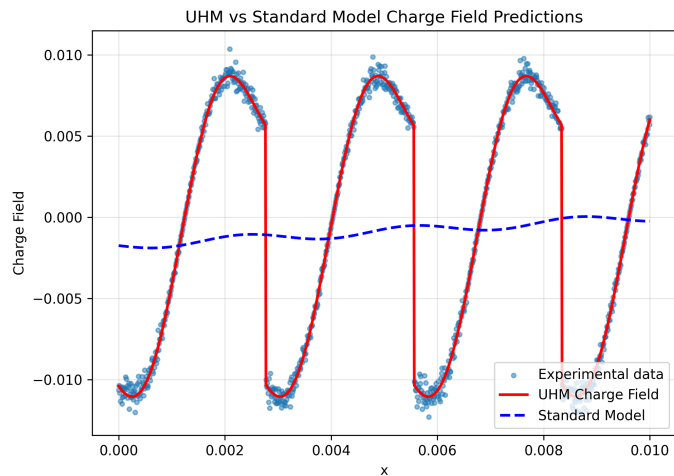


FFT Magnitude Spectrum of isospin_field



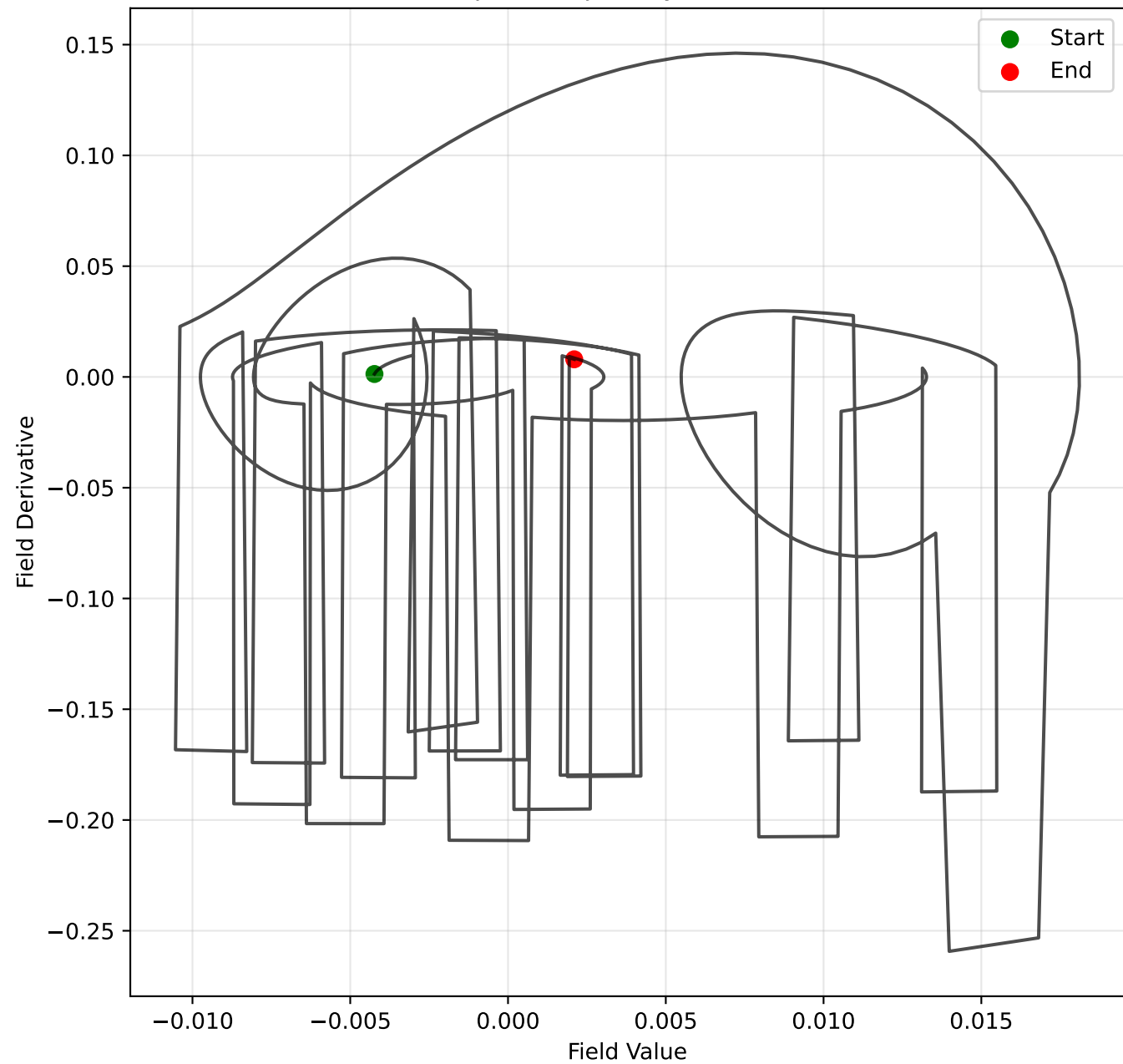
Zoomed Comparison: Region of Maximum Model Difference

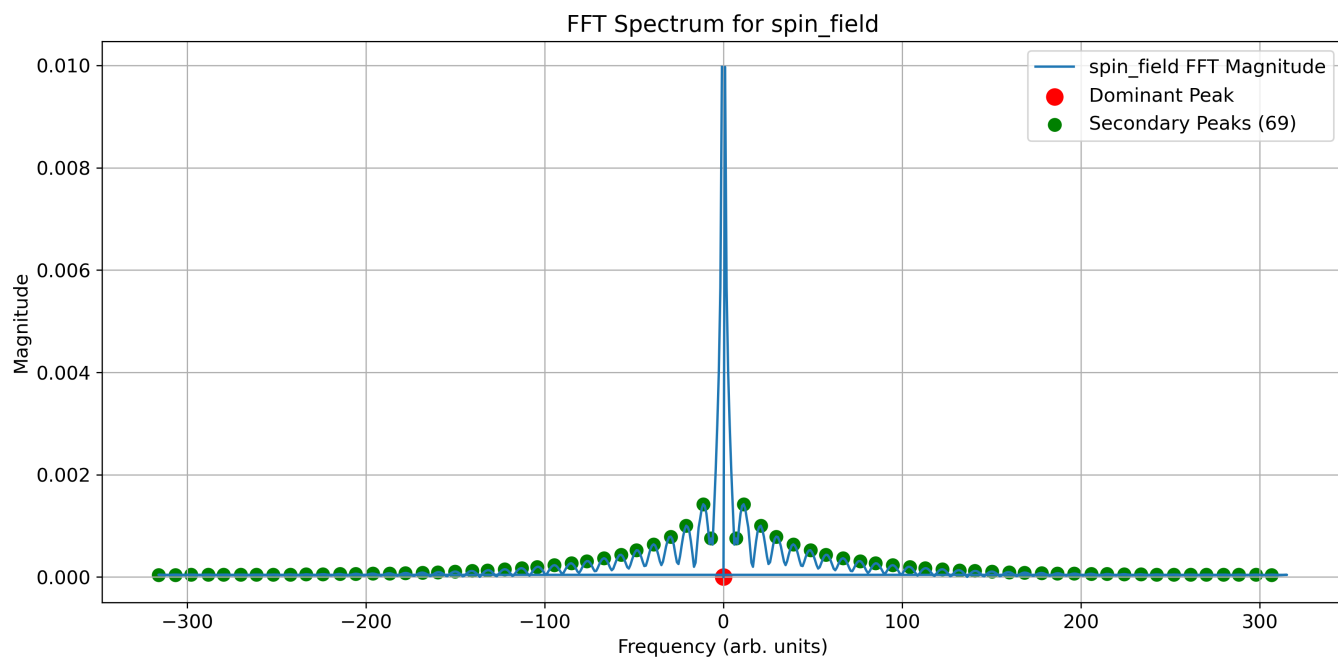




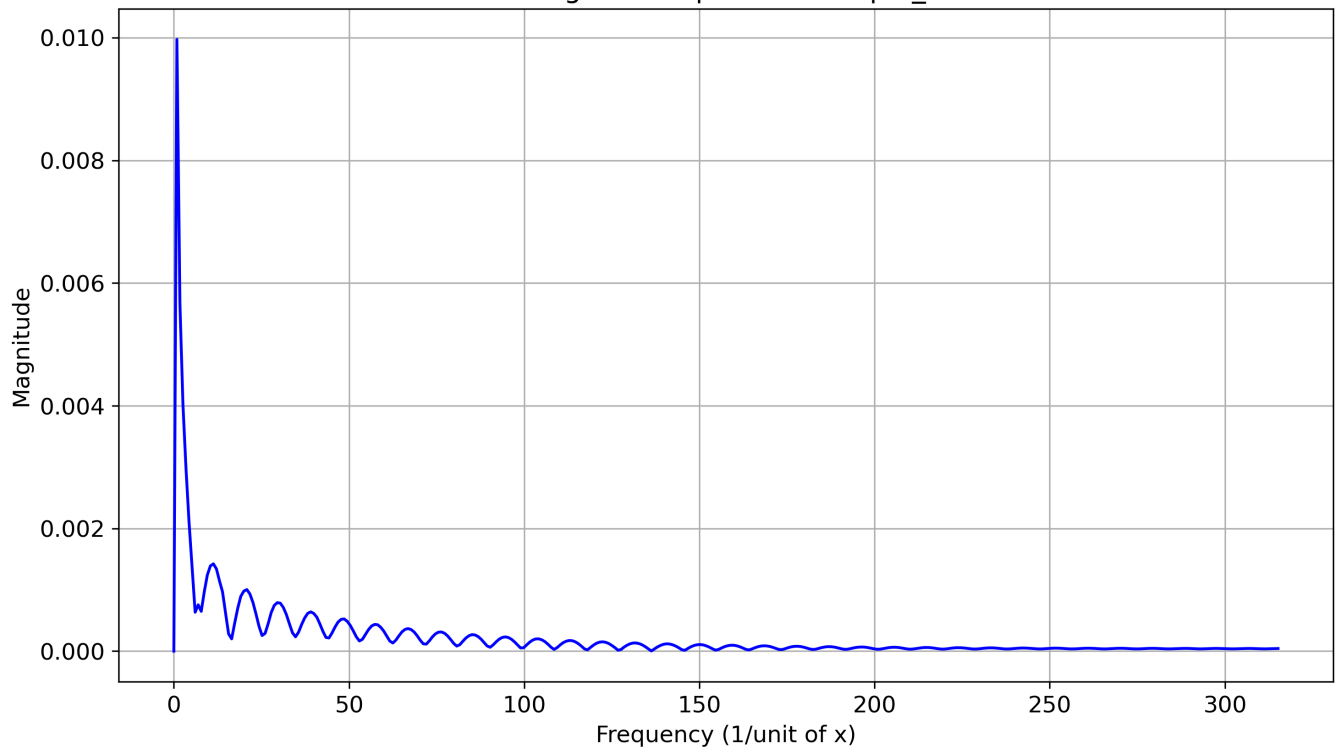
Solitonic Field Analysis: Phase Space

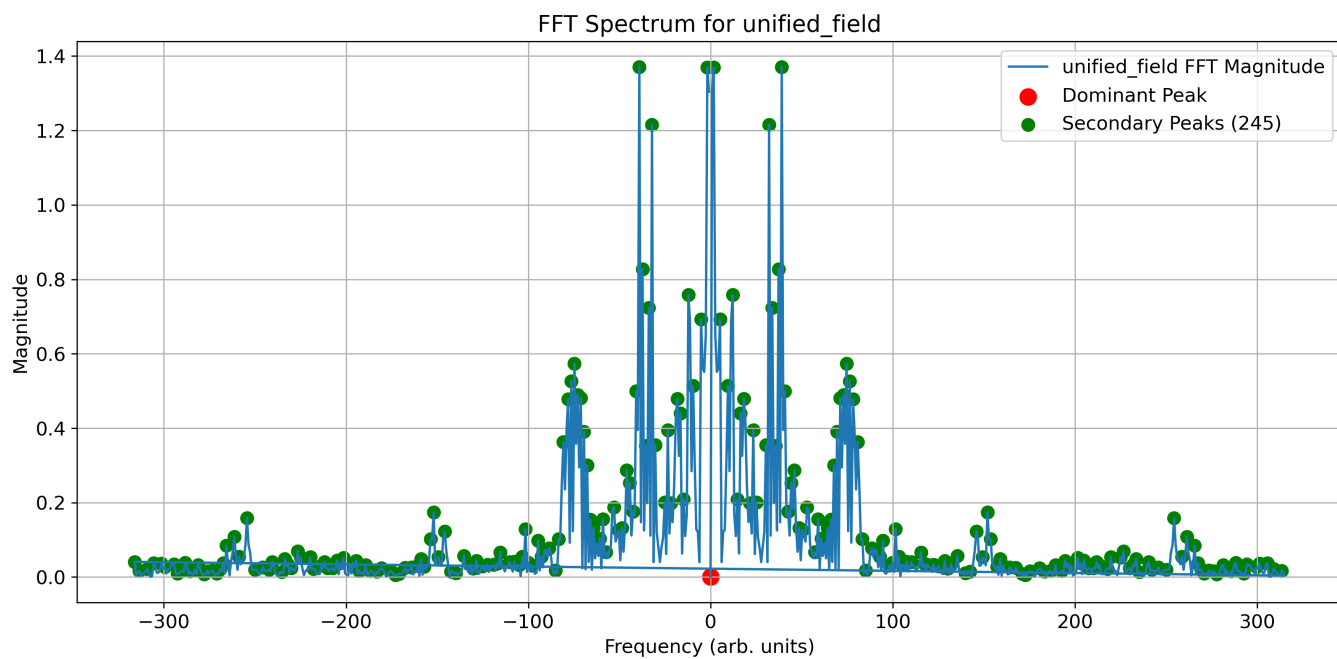
Phase Space Trajectory of Unified Field



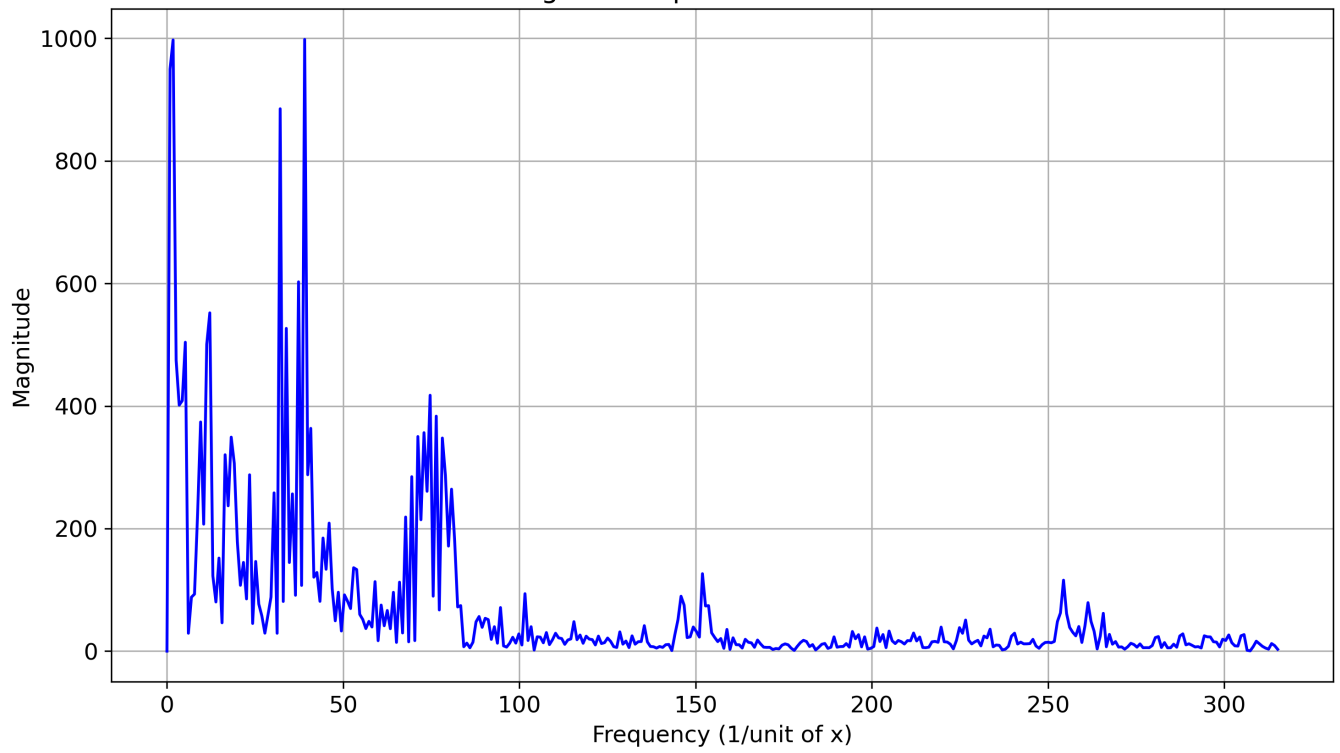


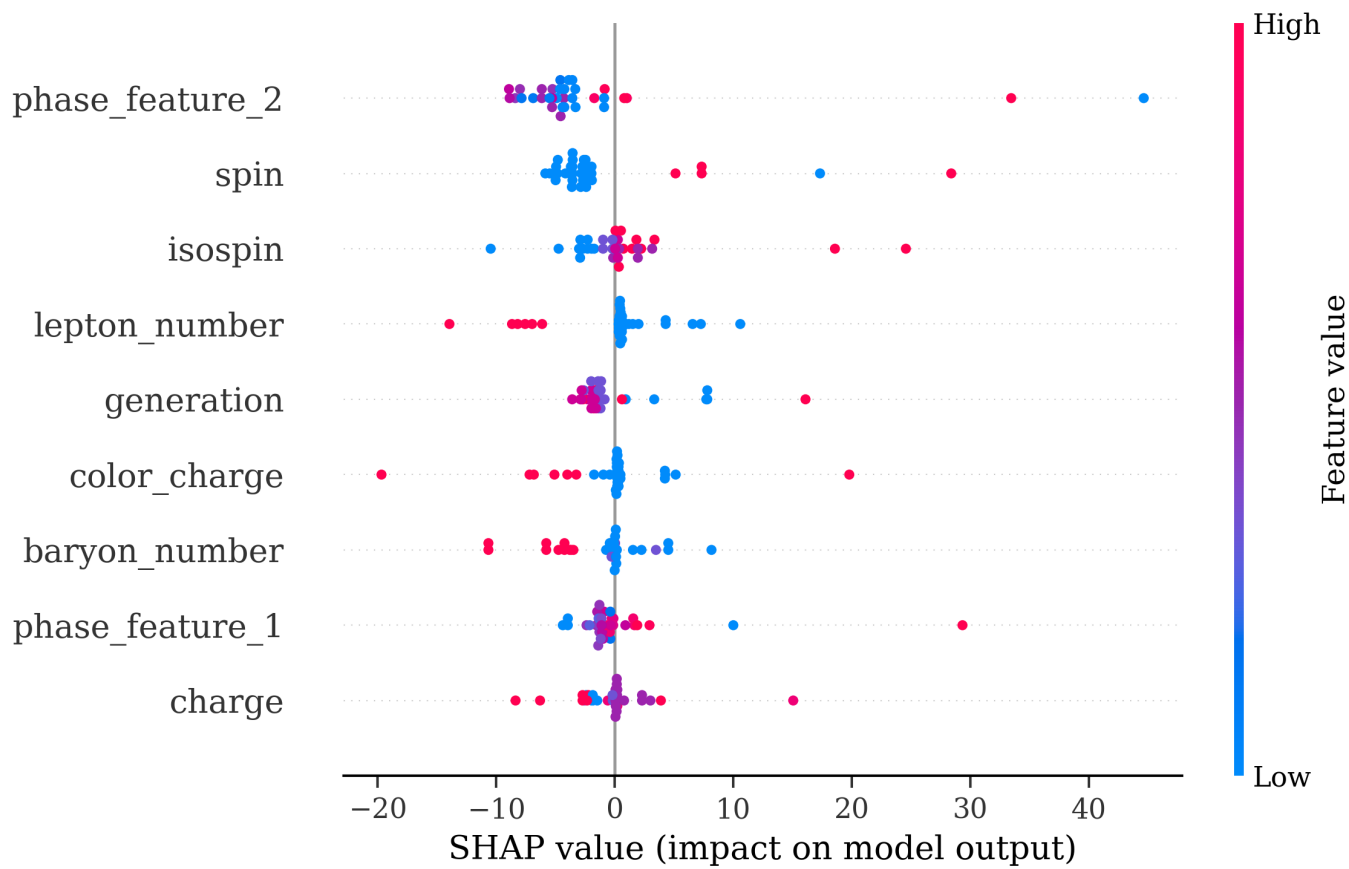
FFT Magnitude Spectrum of spin_field

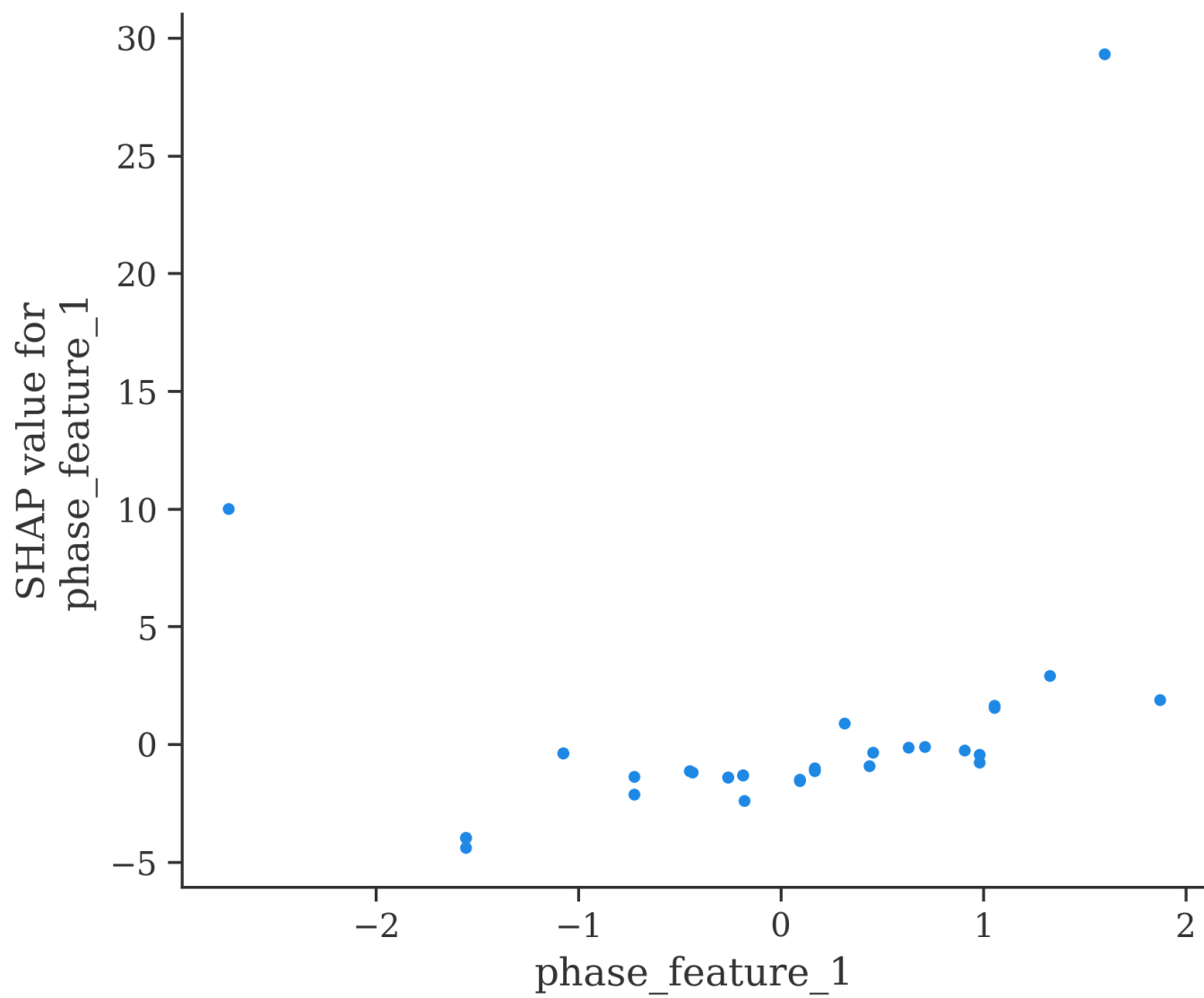


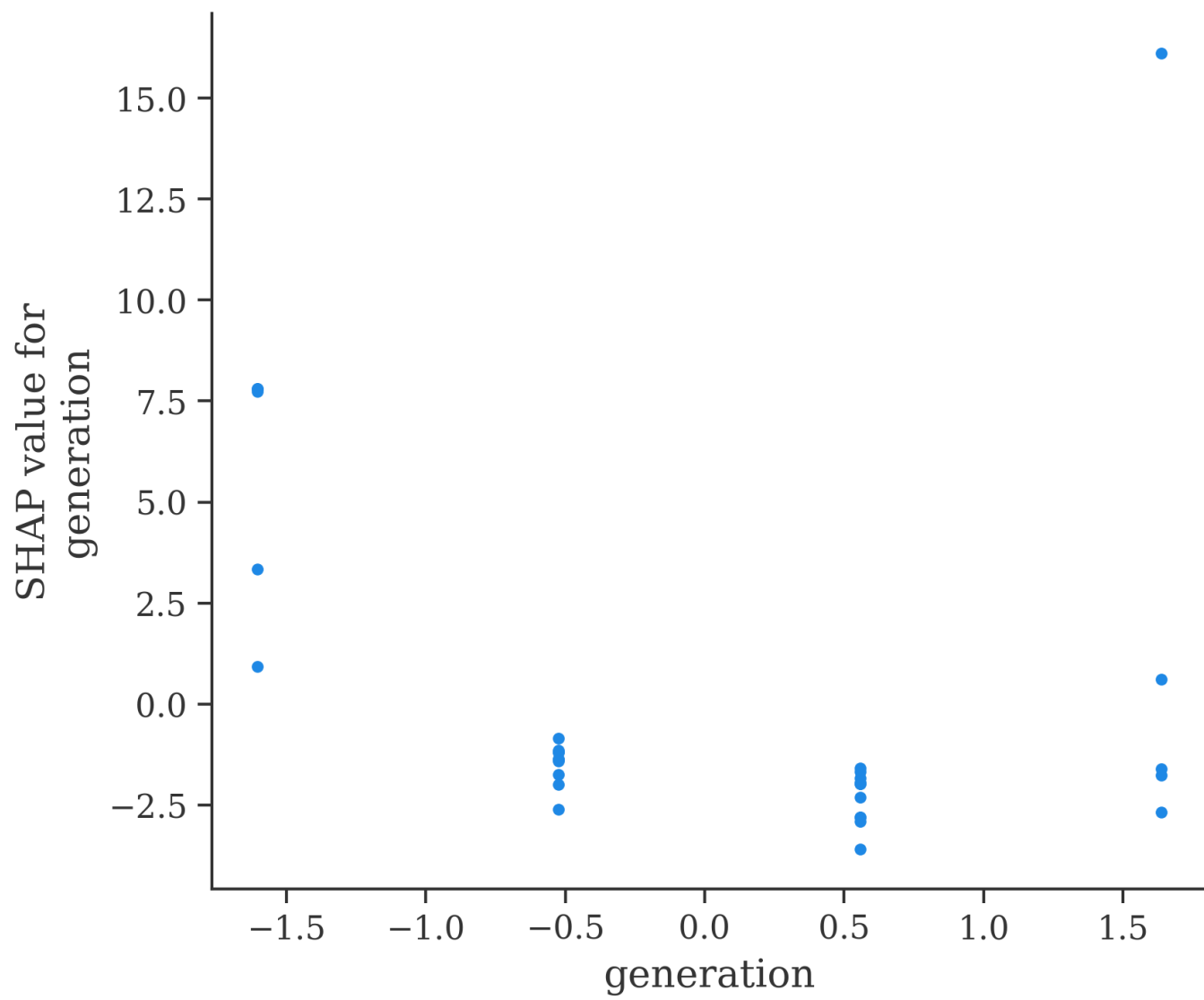


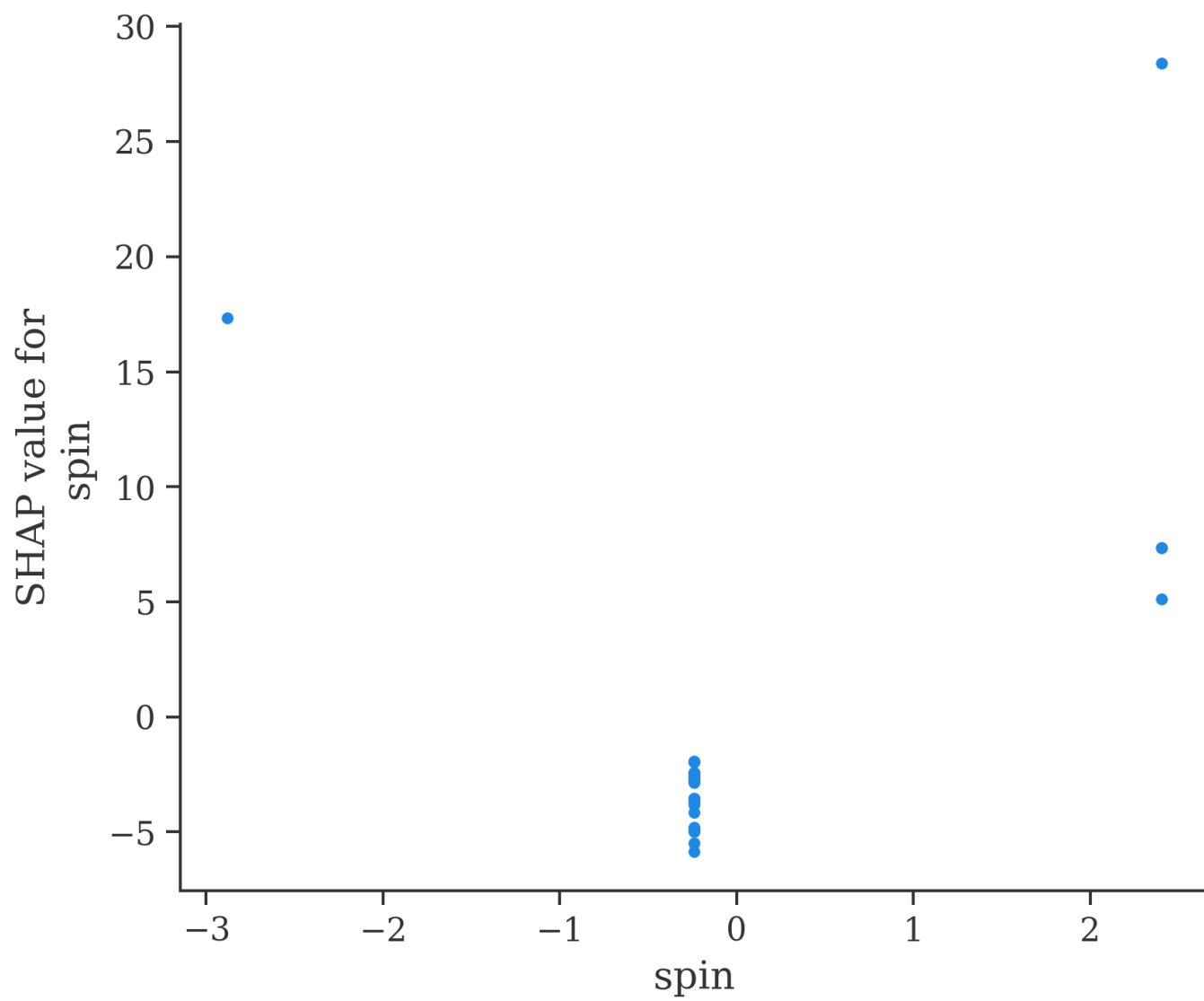
FFT Magnitude Spectrum of Unified Field

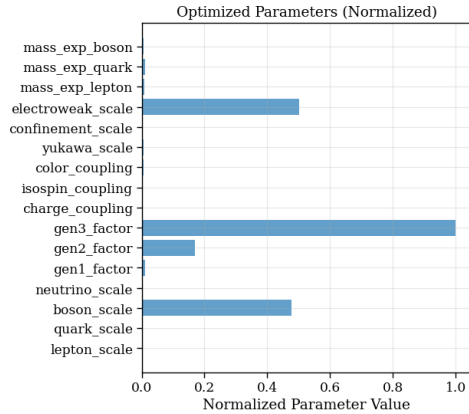
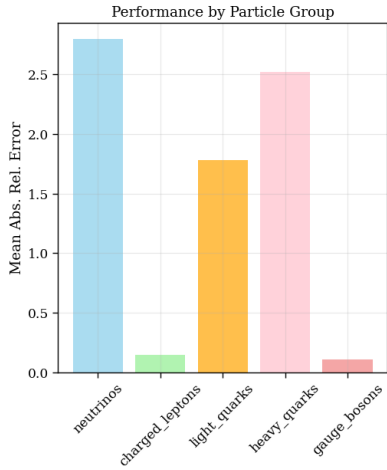
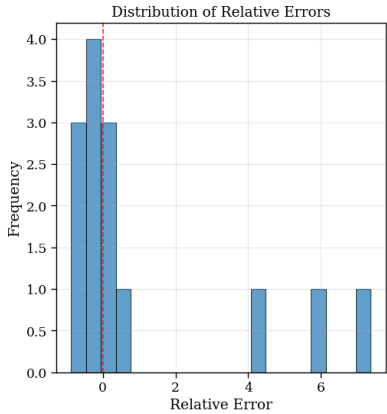
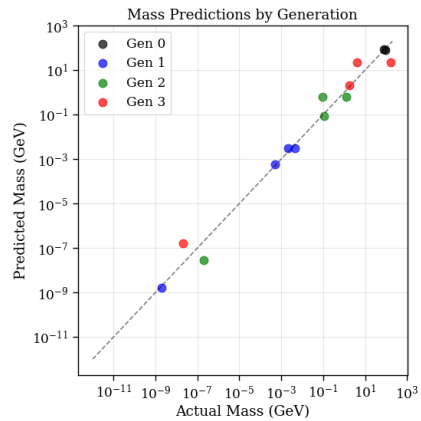
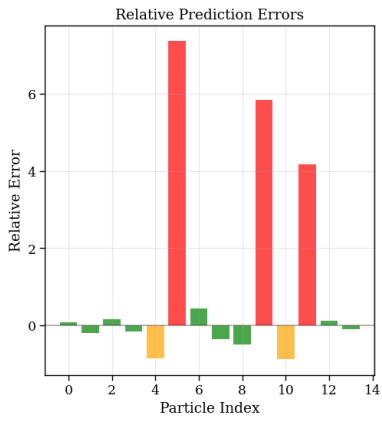
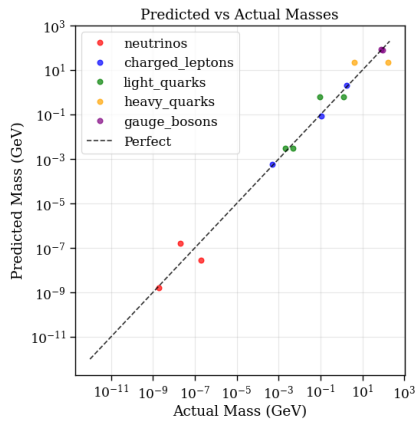




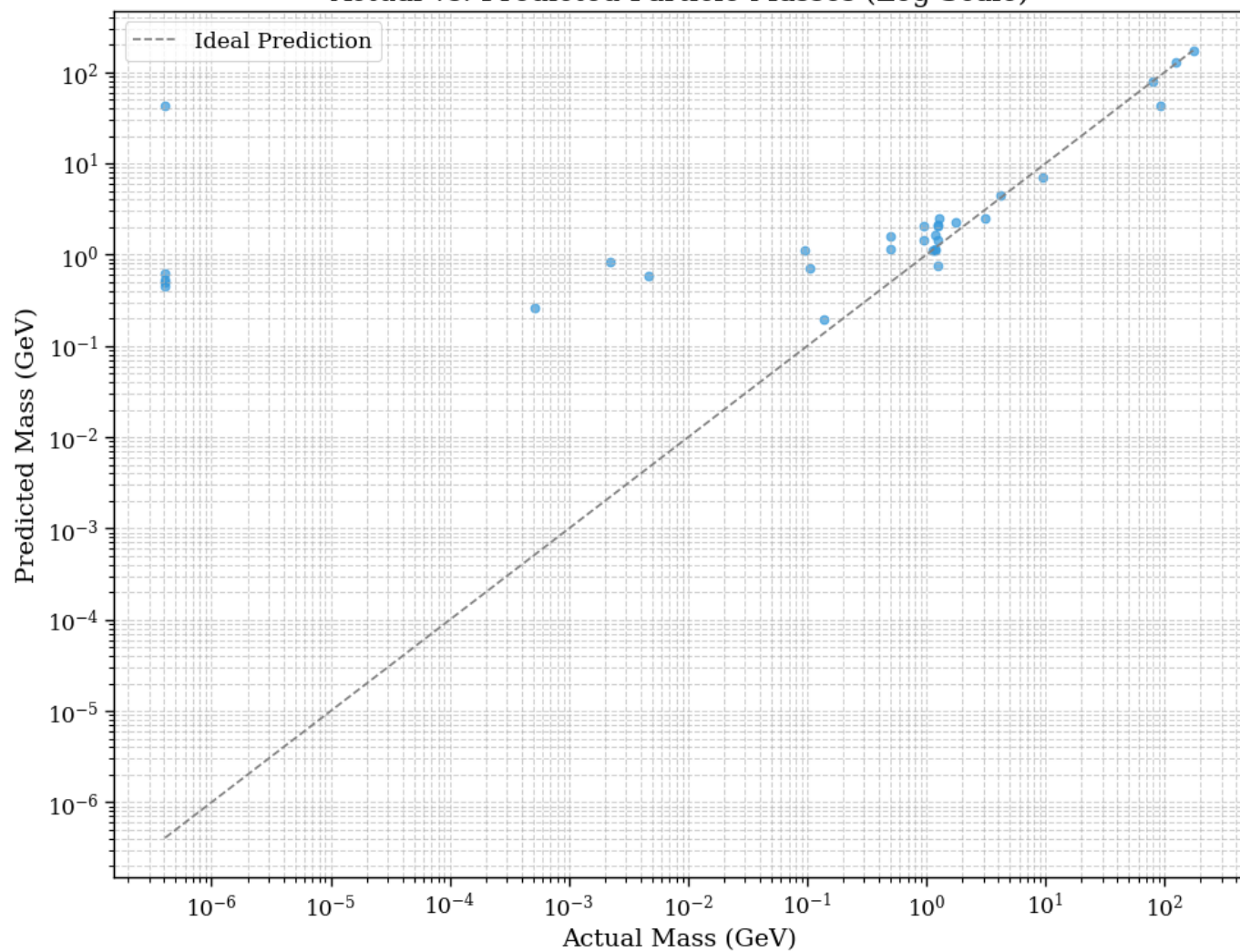




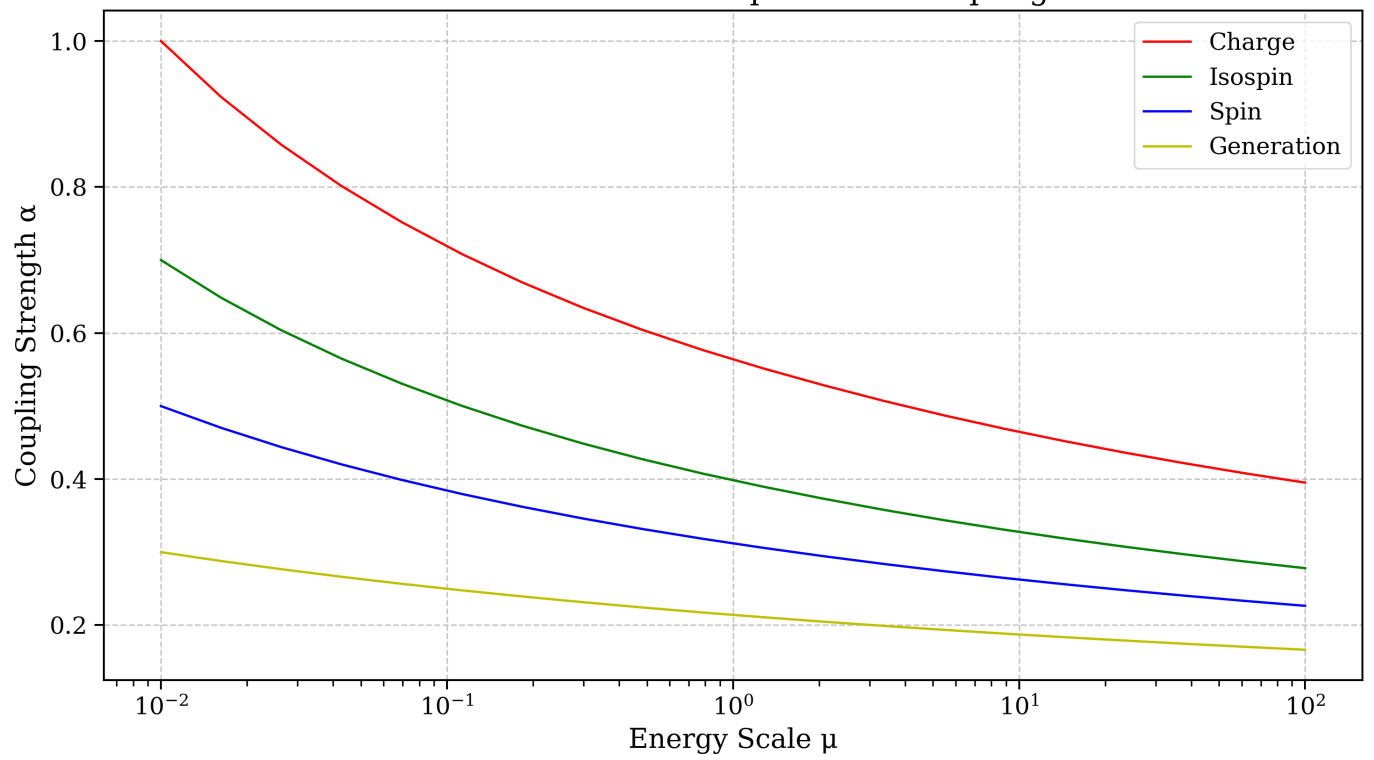


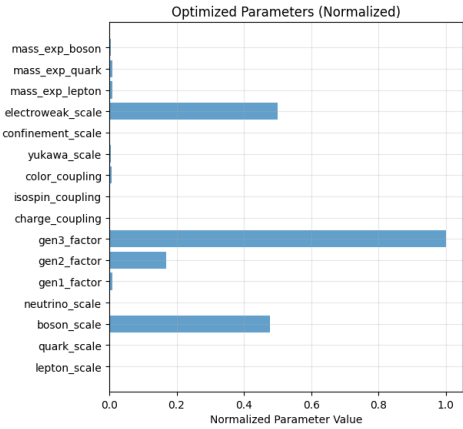
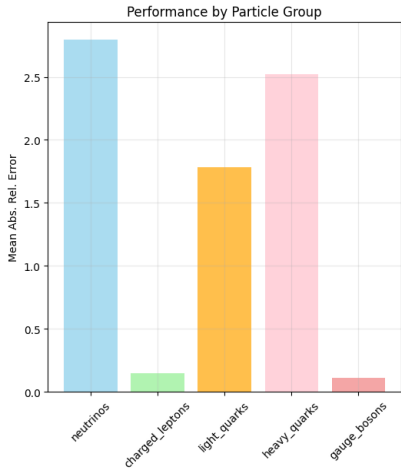
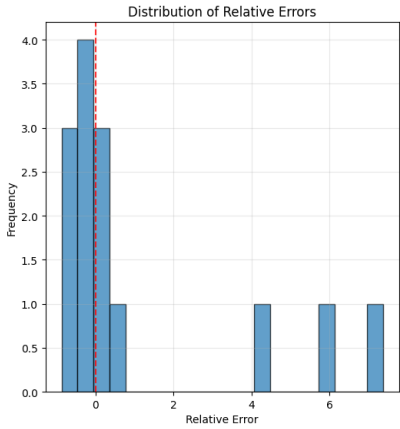
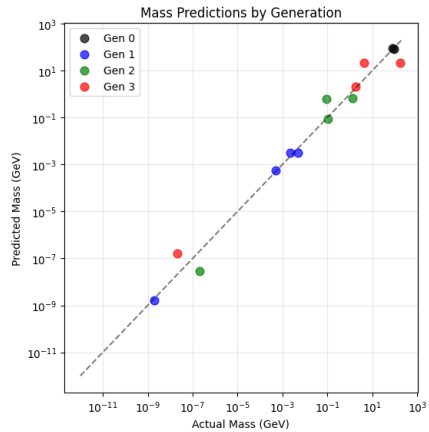
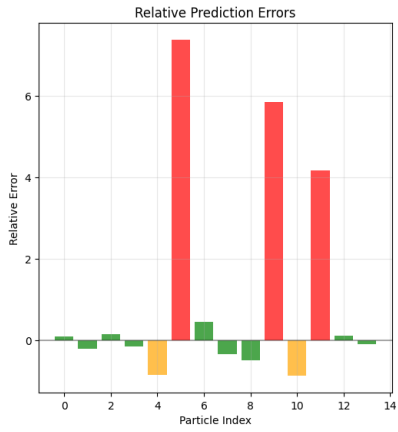
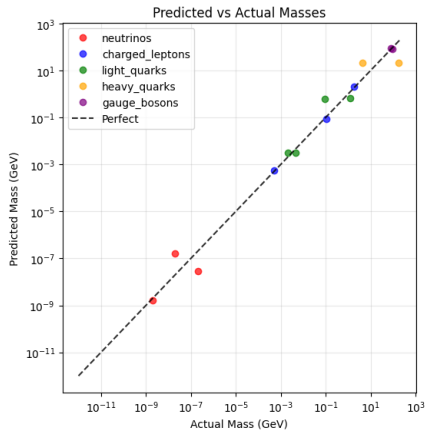


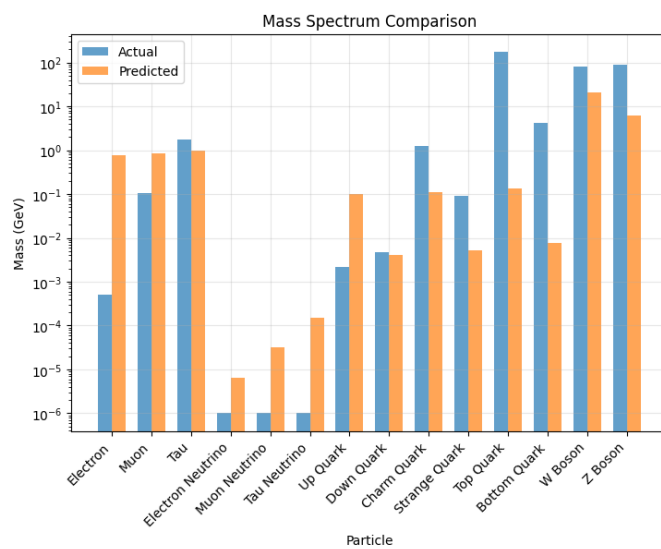
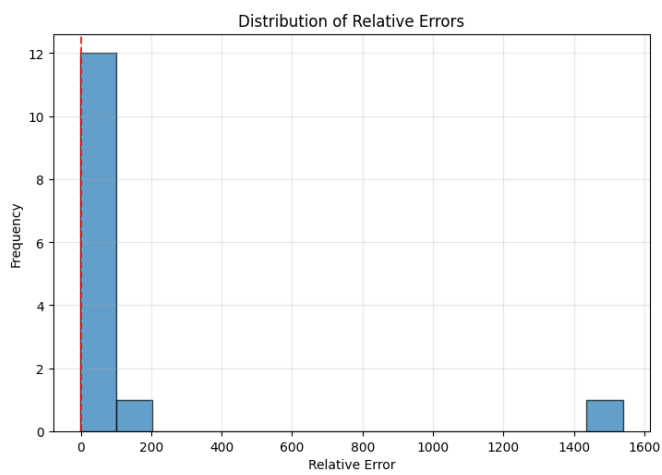
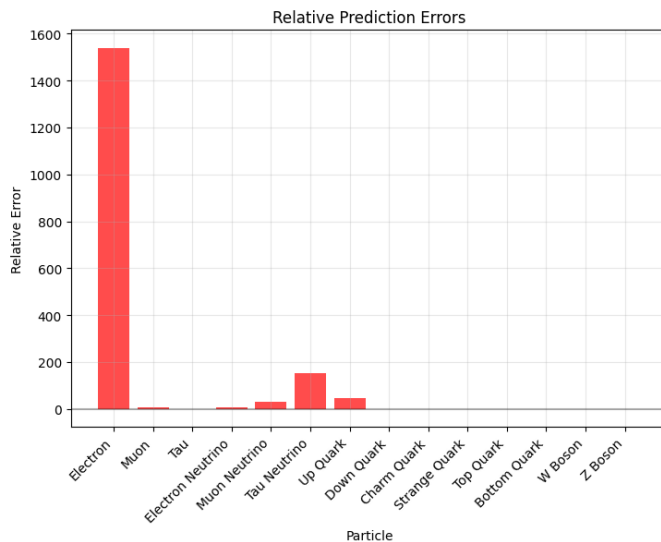
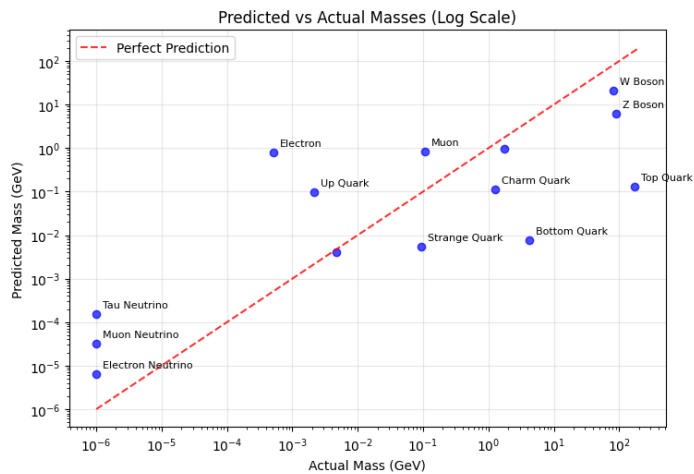
Actual vs. Predicted Particle Masses (Log Scale)

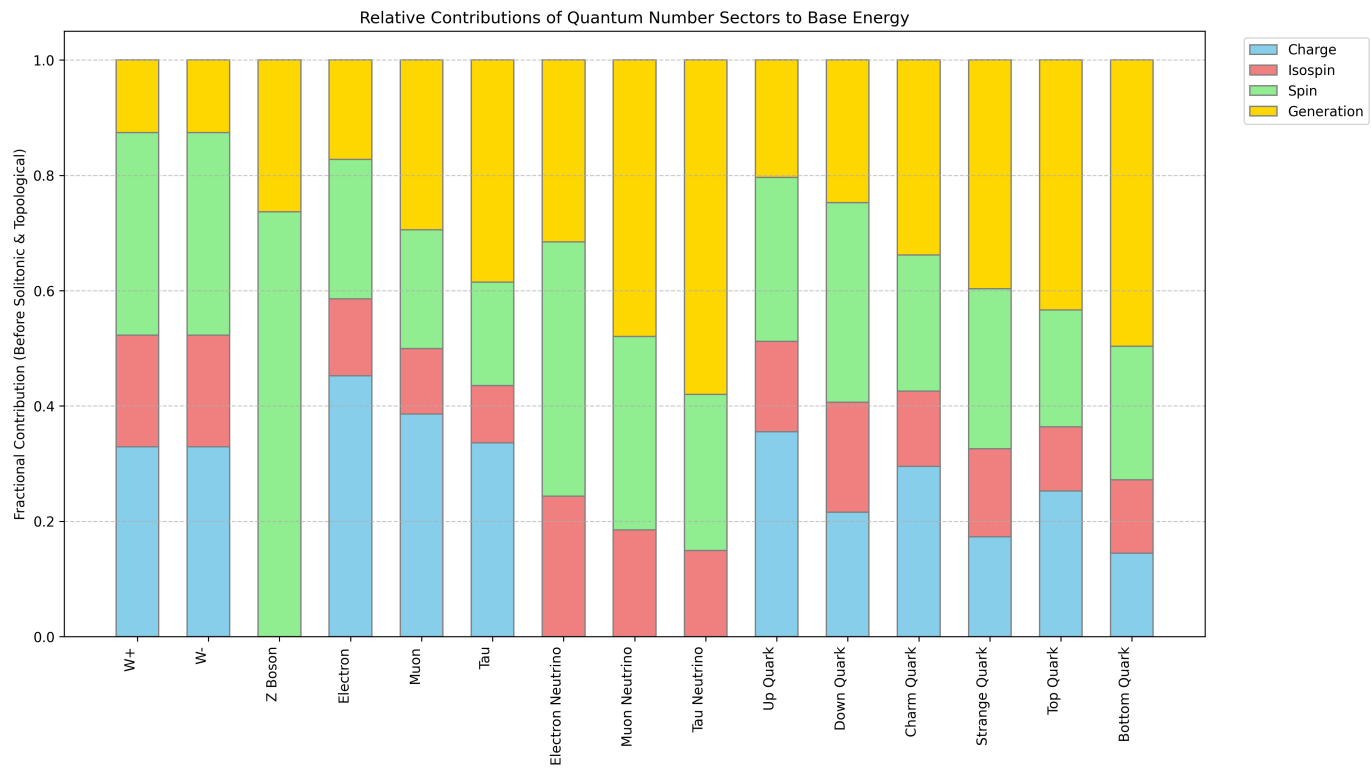


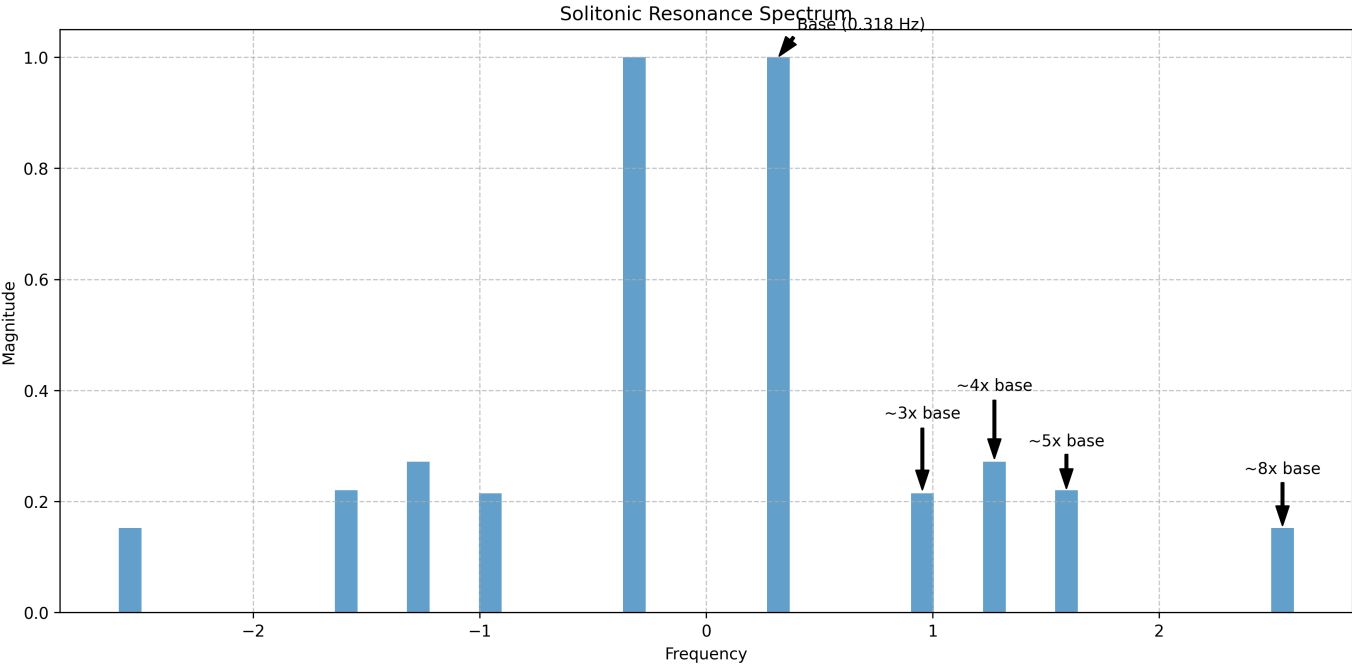
Renormalization Group Flow of Couplings



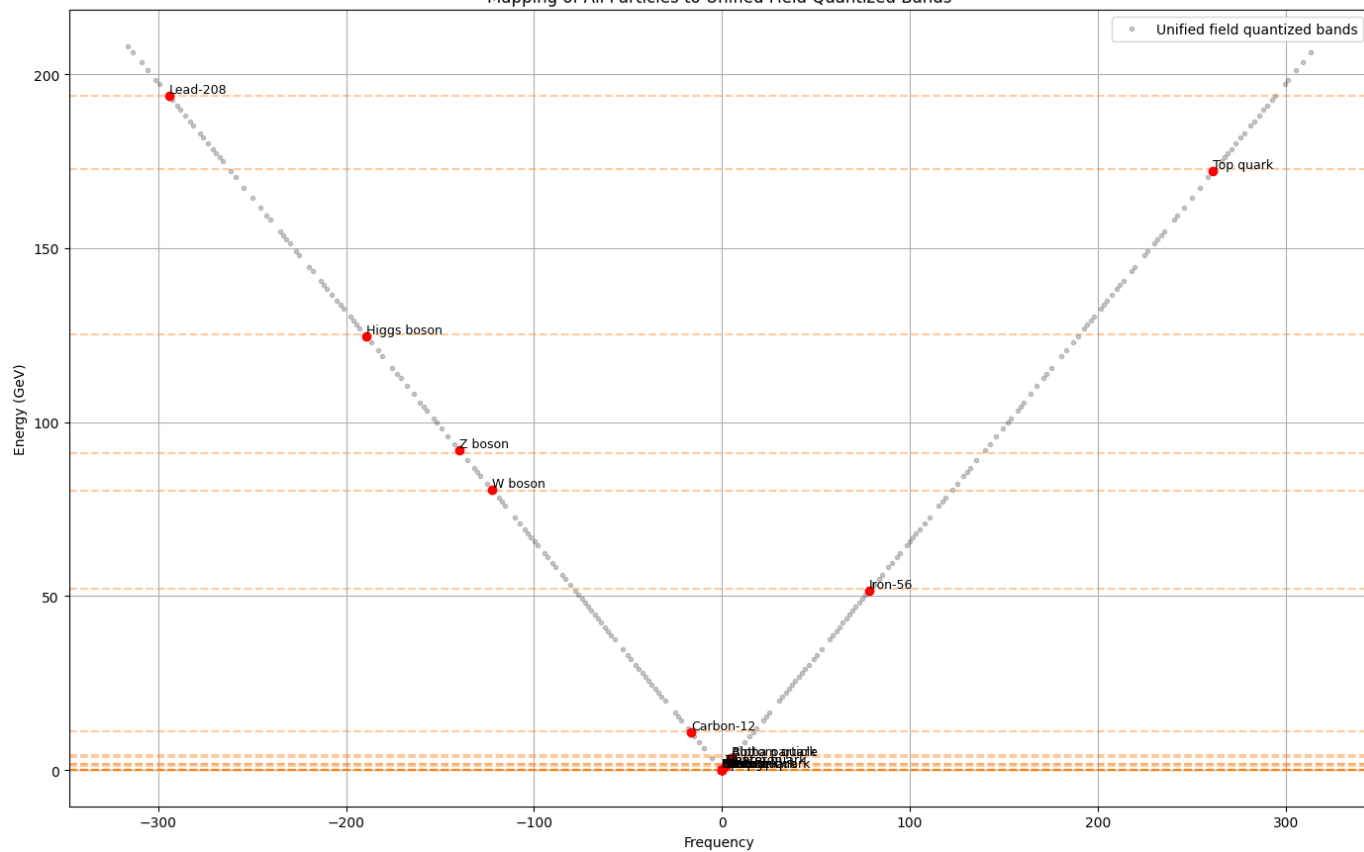




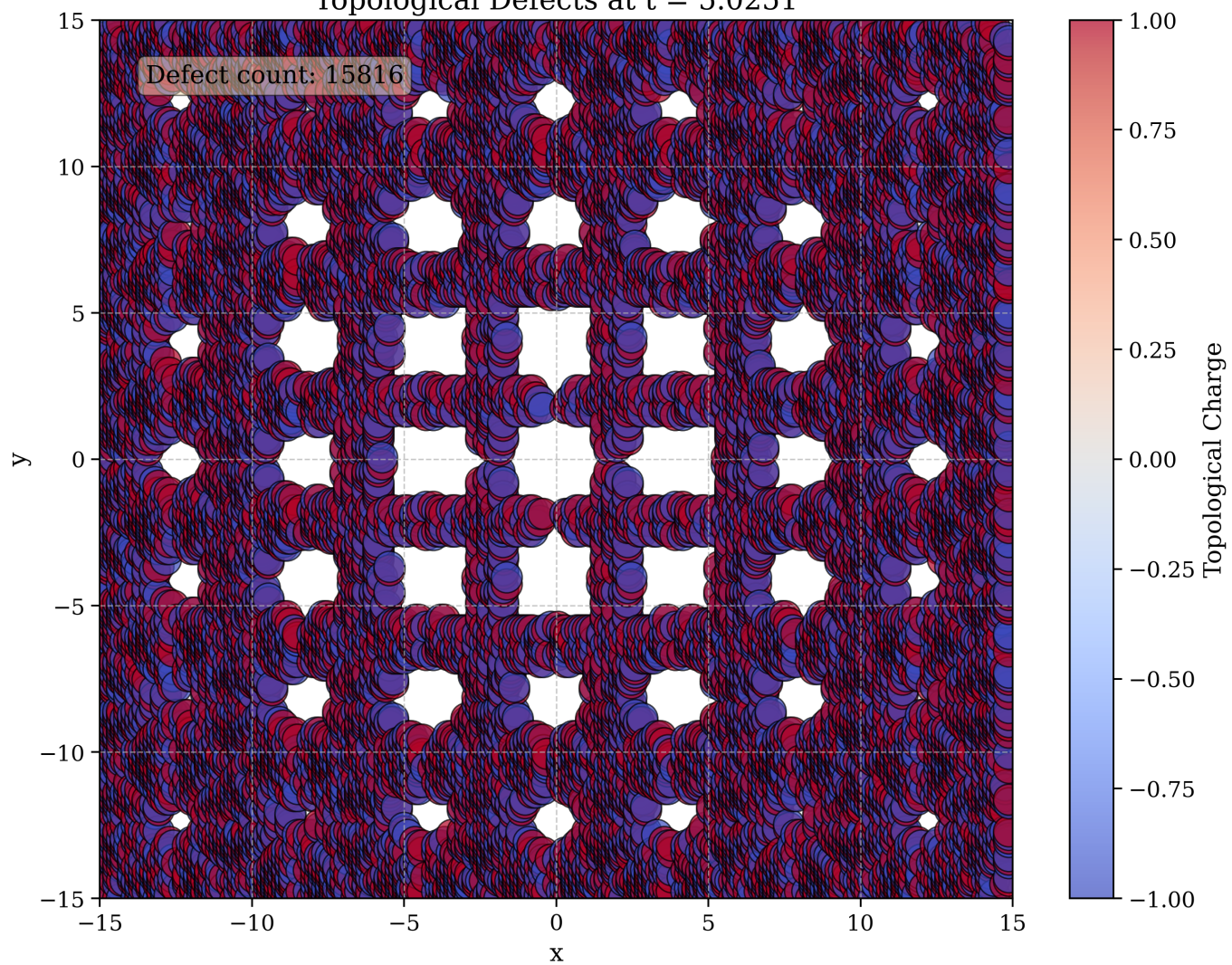




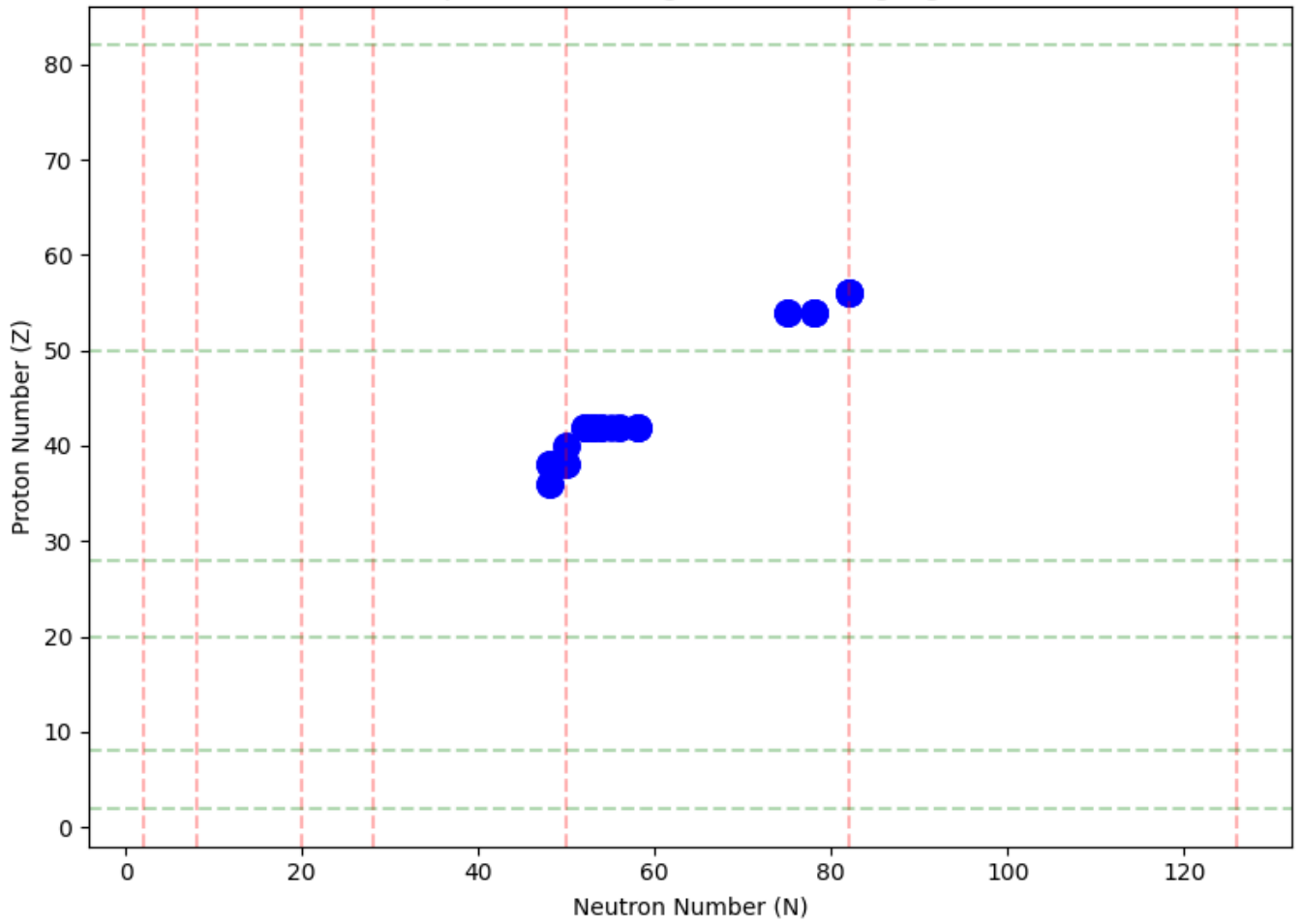
Mapping of All Particles to Unified Field Quantized Bands



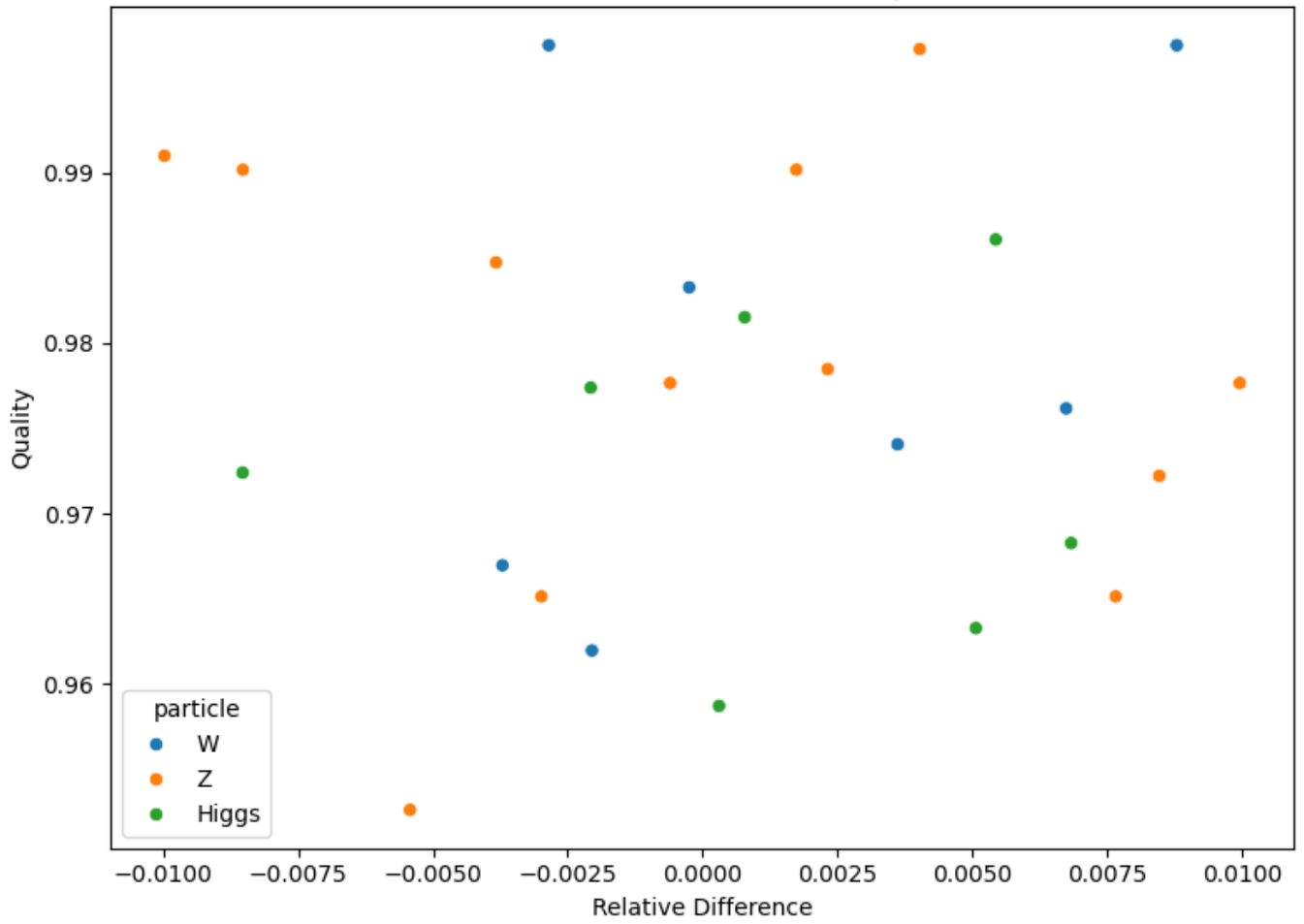
Topological Defects at $t = 5.0251$



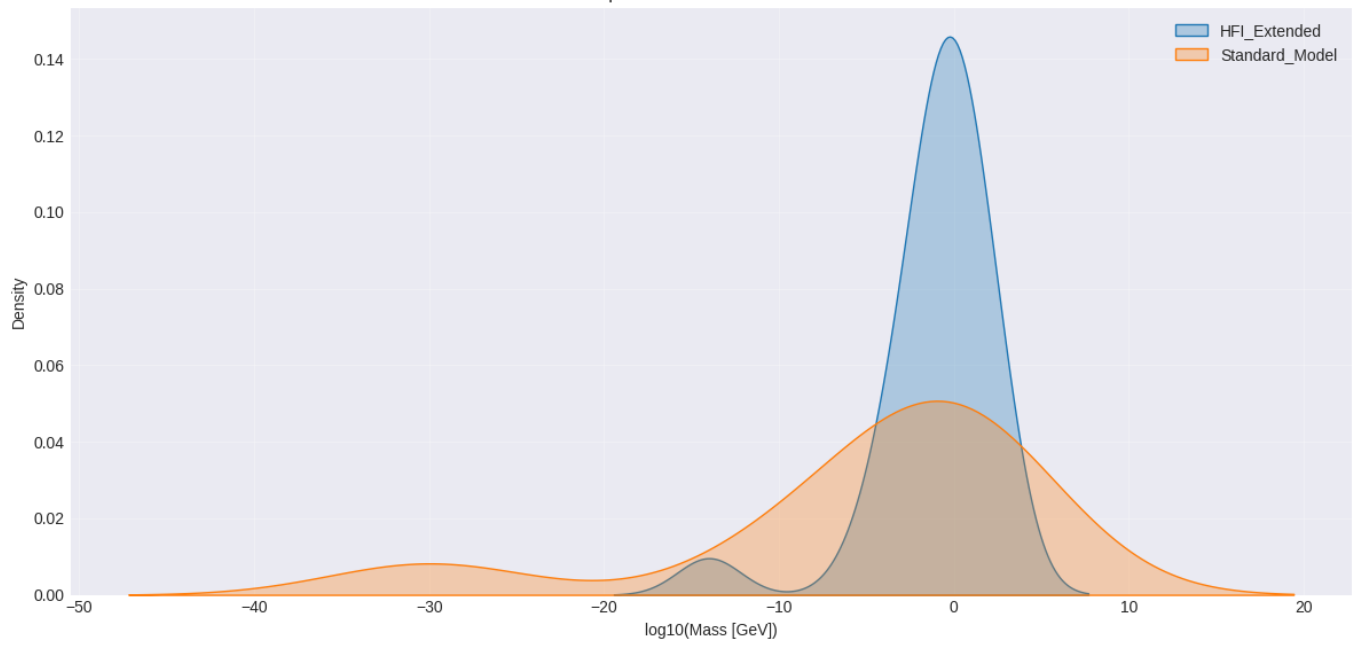
Isotope Matches: Magic Numbers Highlighted



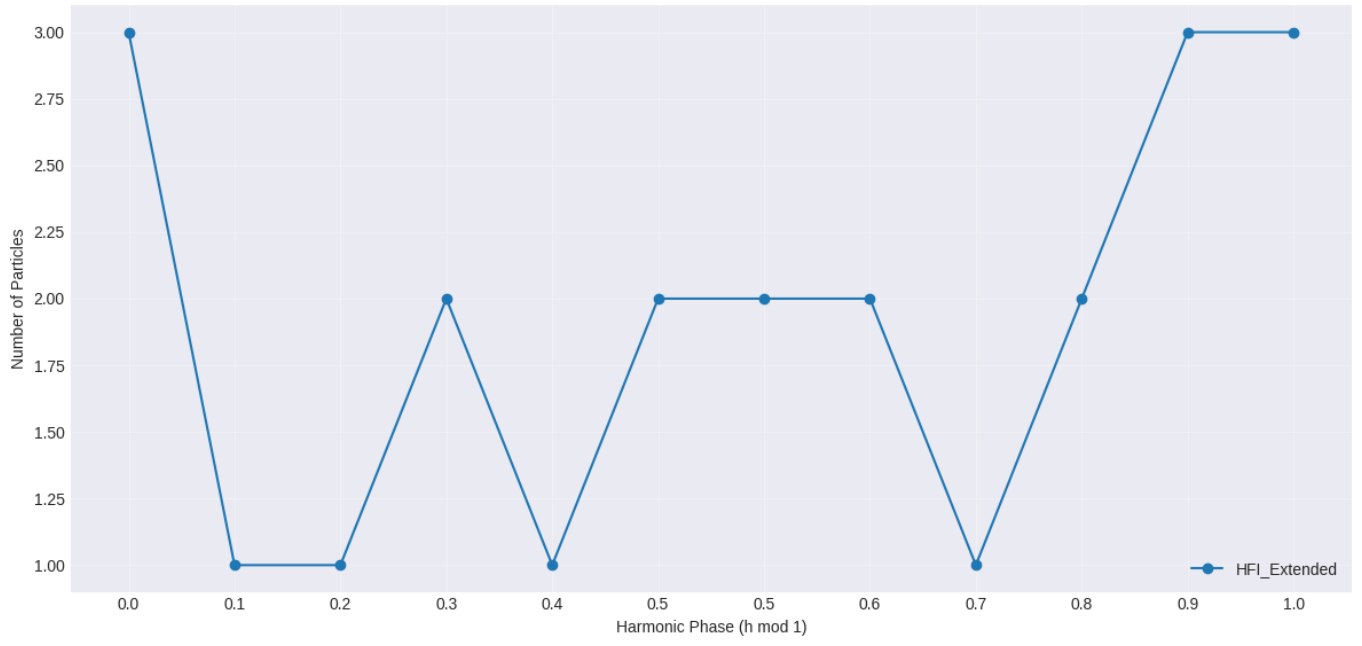
Relative Difference vs Quality



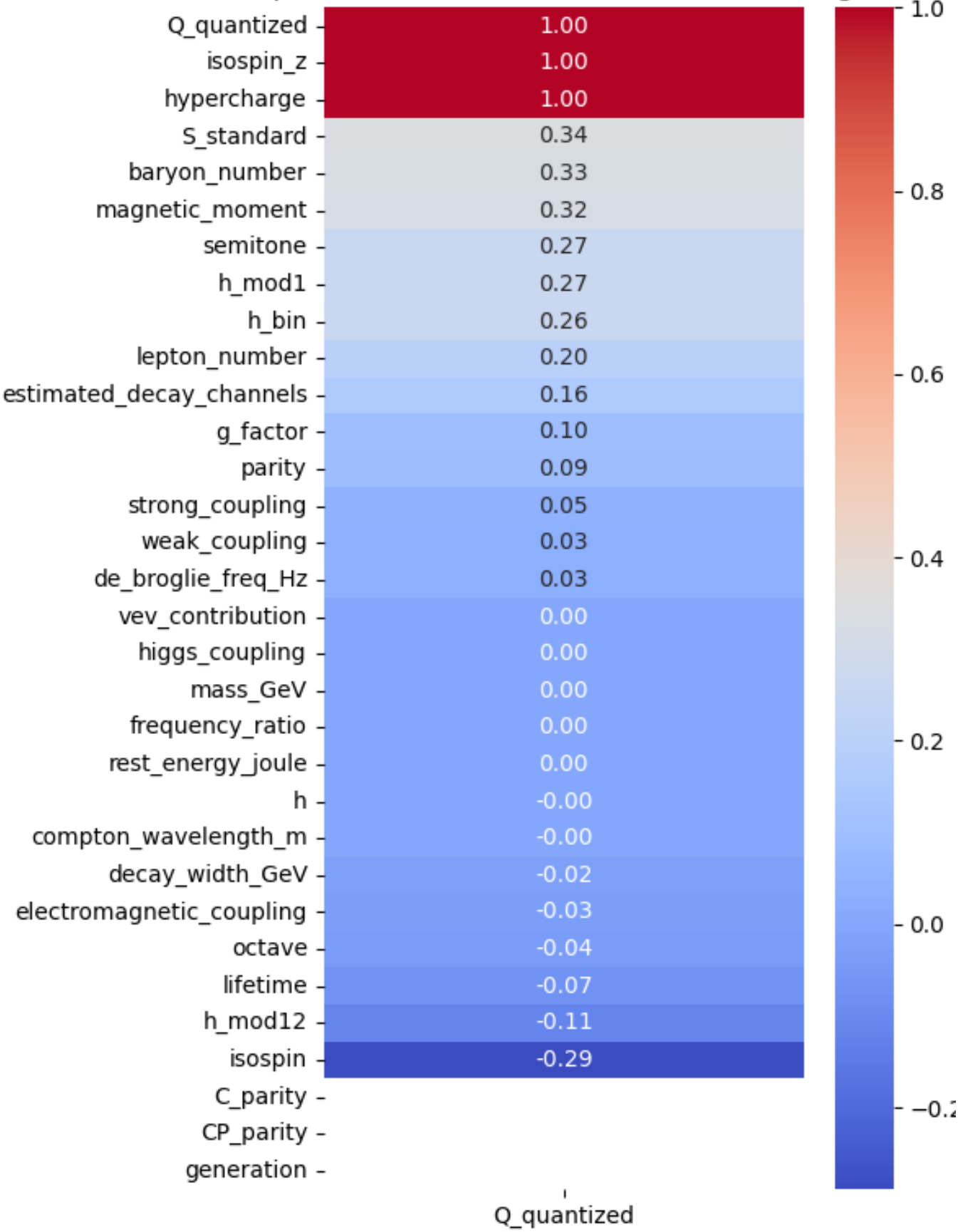
Comparison of Mass Distributions



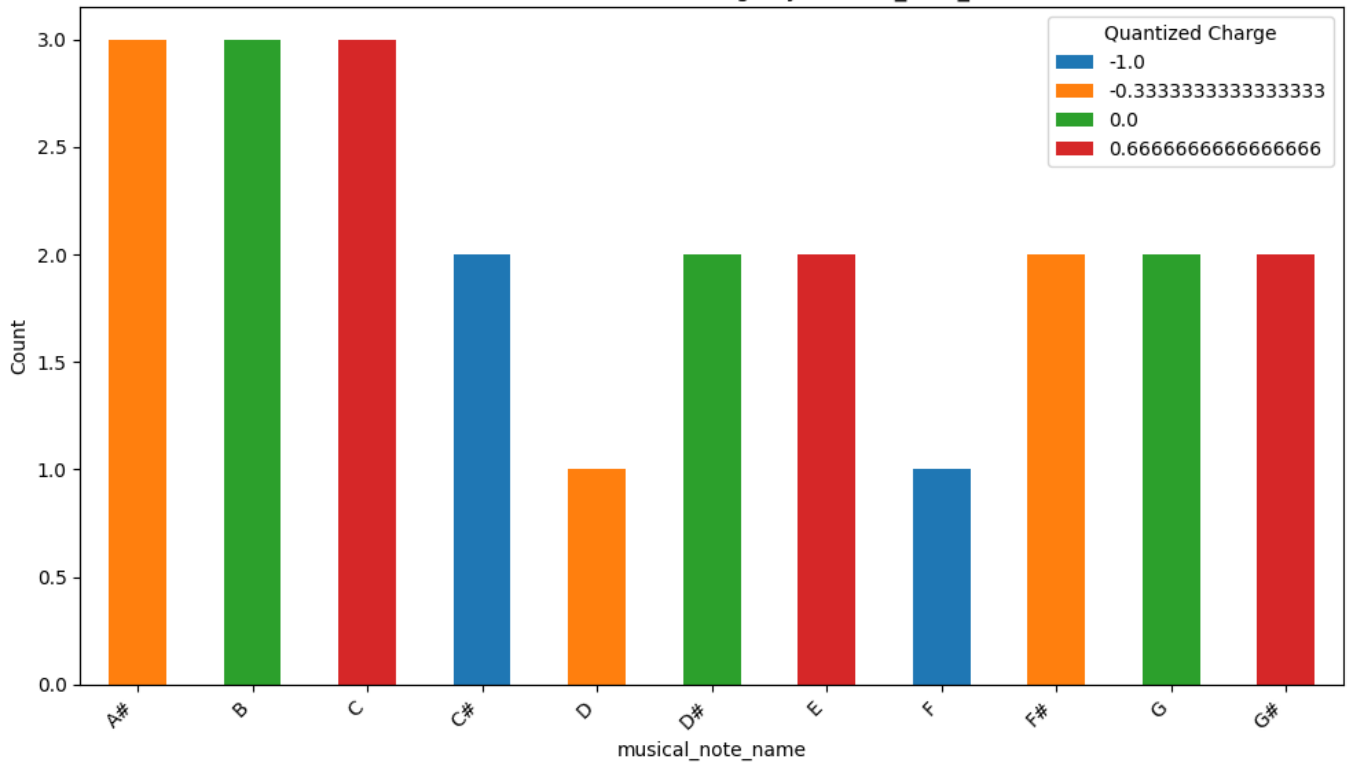
Comparison of Harmonic Phase Distribution



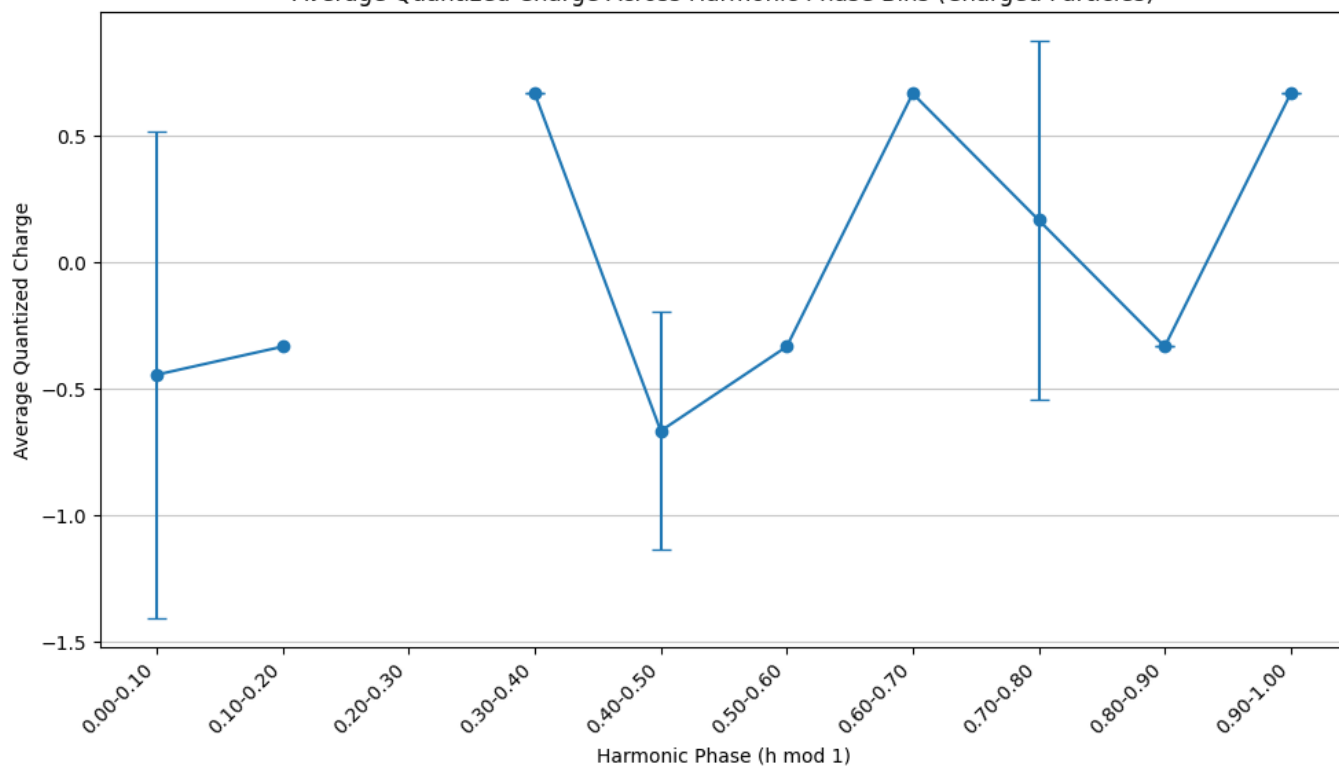
Spearman Correlation with Quantized Charge



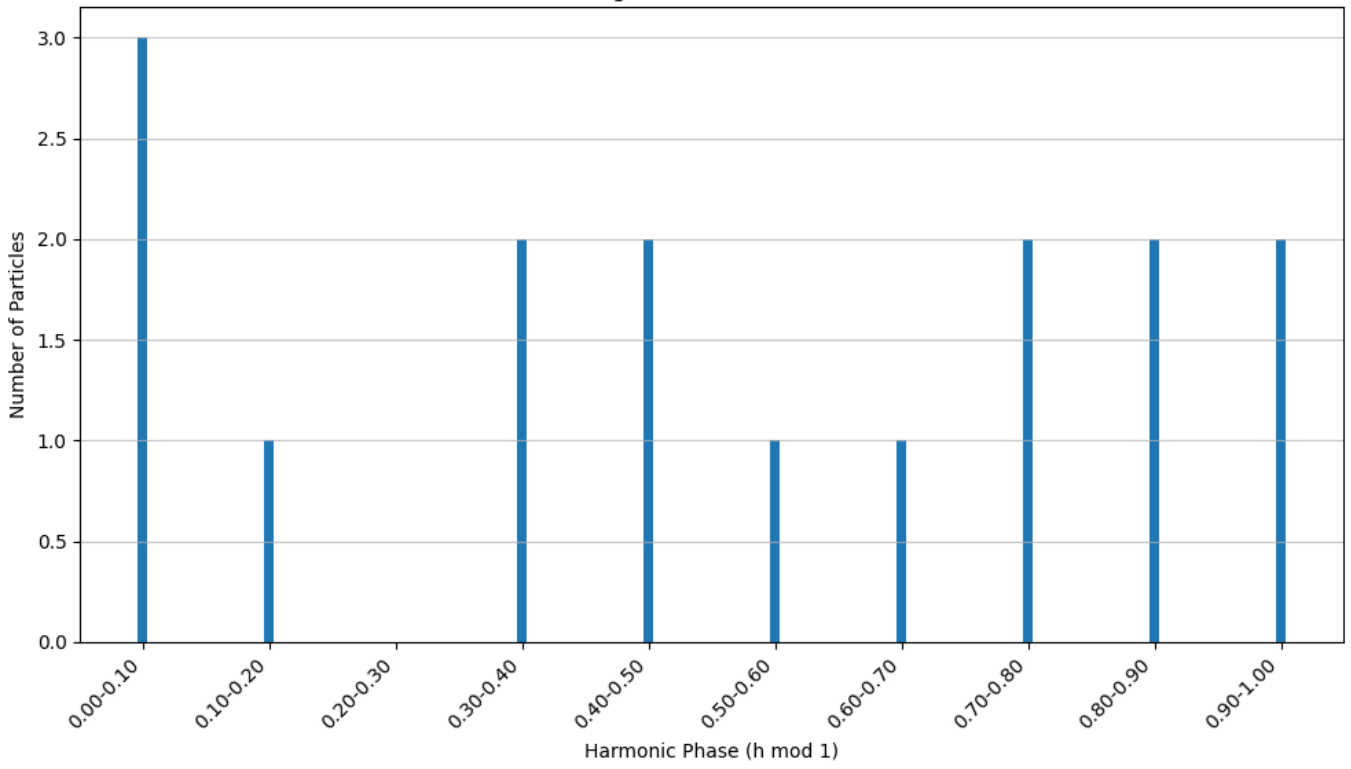
Distribution of Quantized Charge by musical_note_name



Average Quantized Charge Across Harmonic Phase Bins (Charged Particles)



Distribution of Charged Particles Across Harmonic Phase



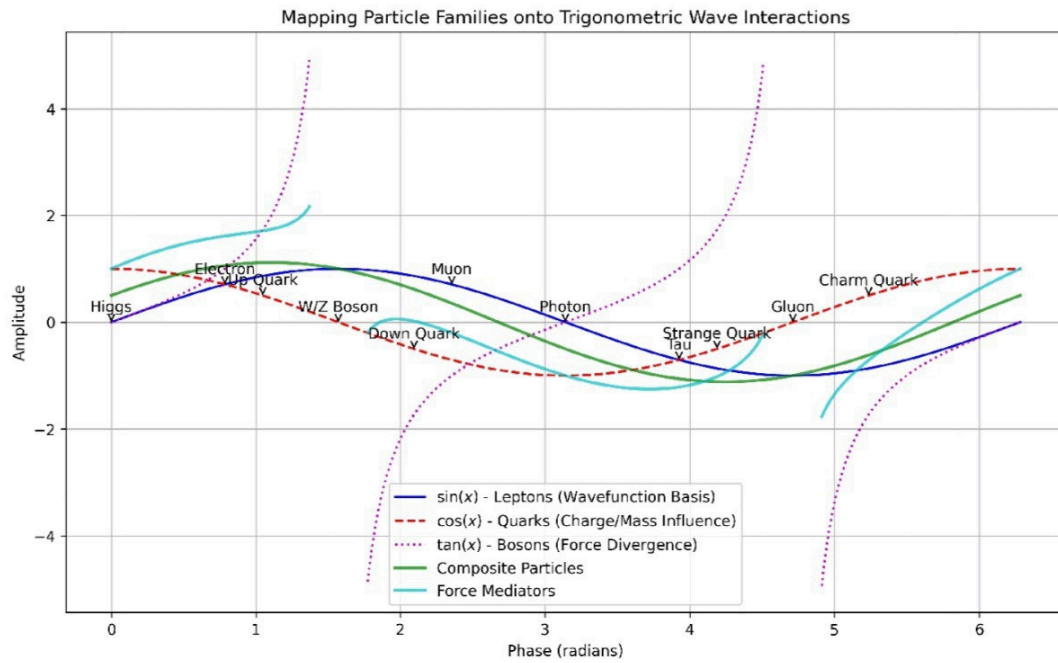
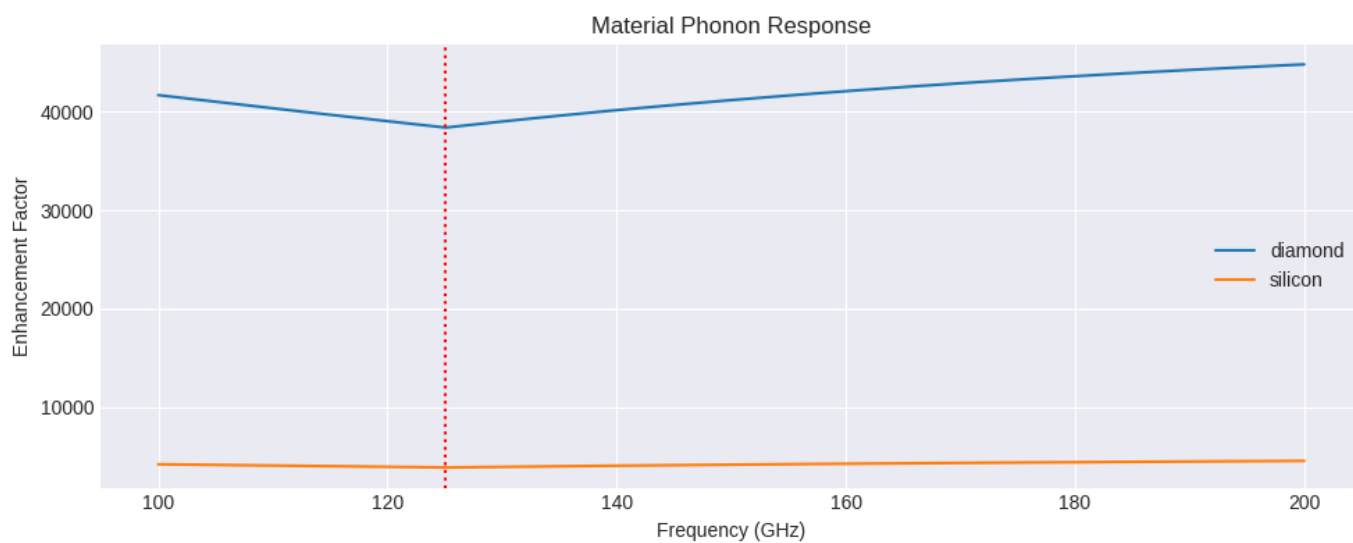
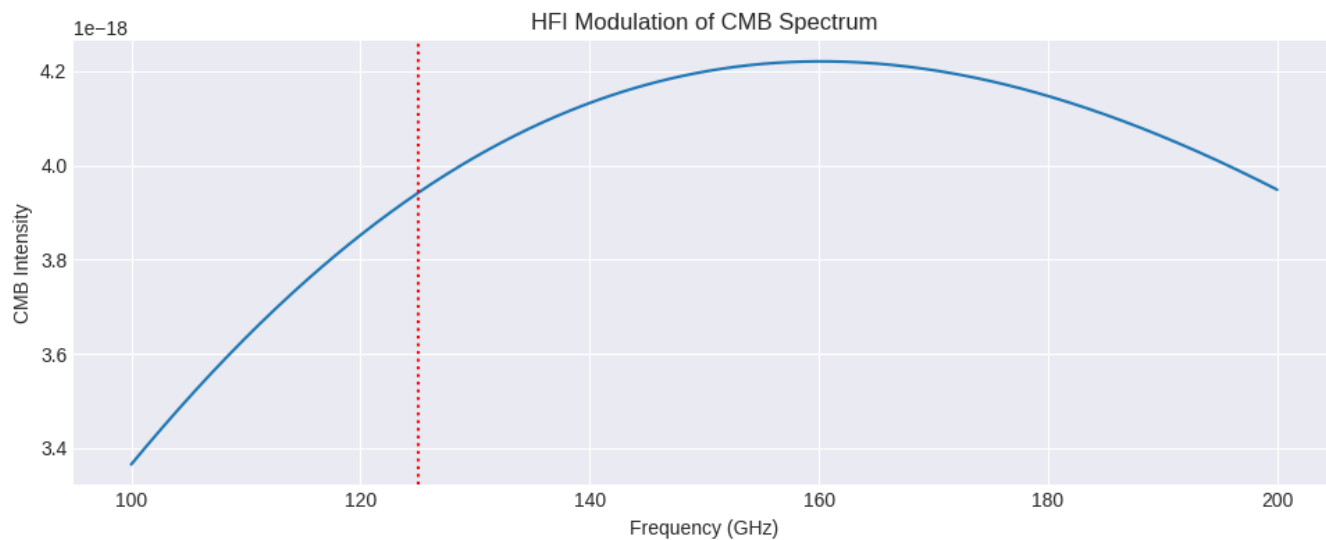
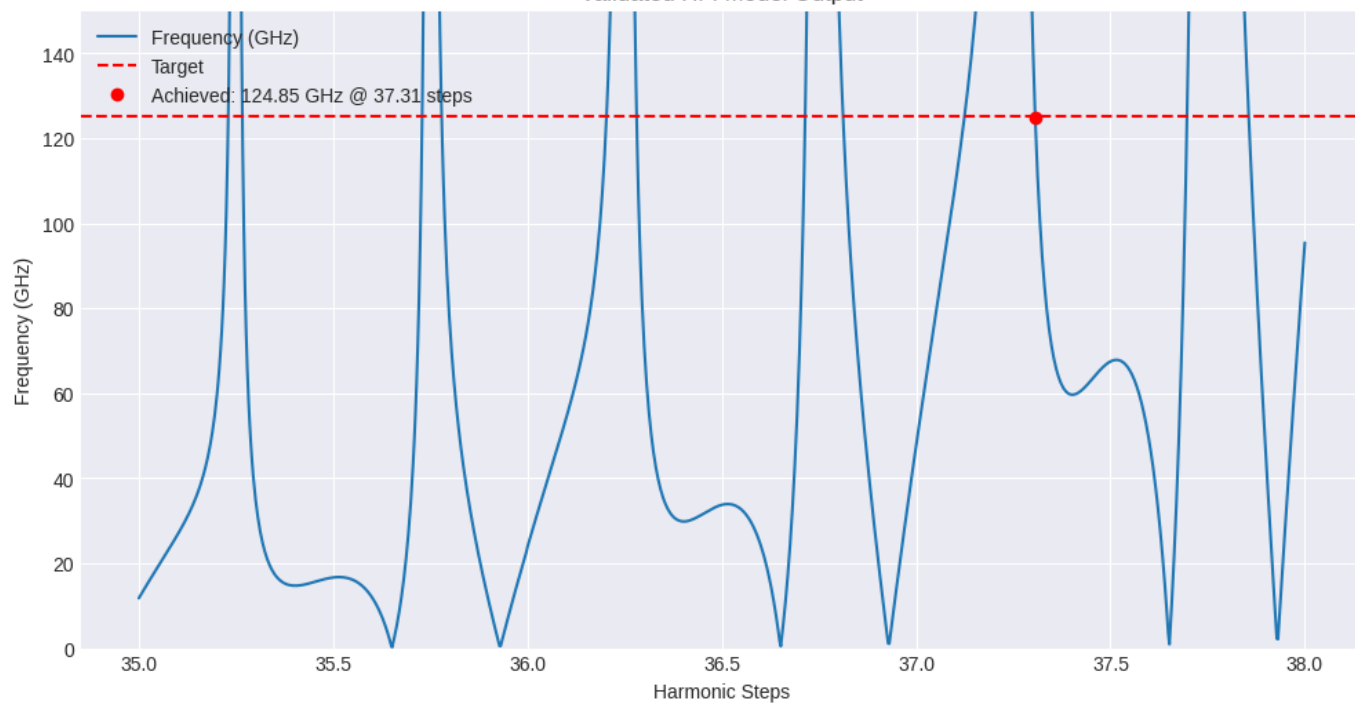


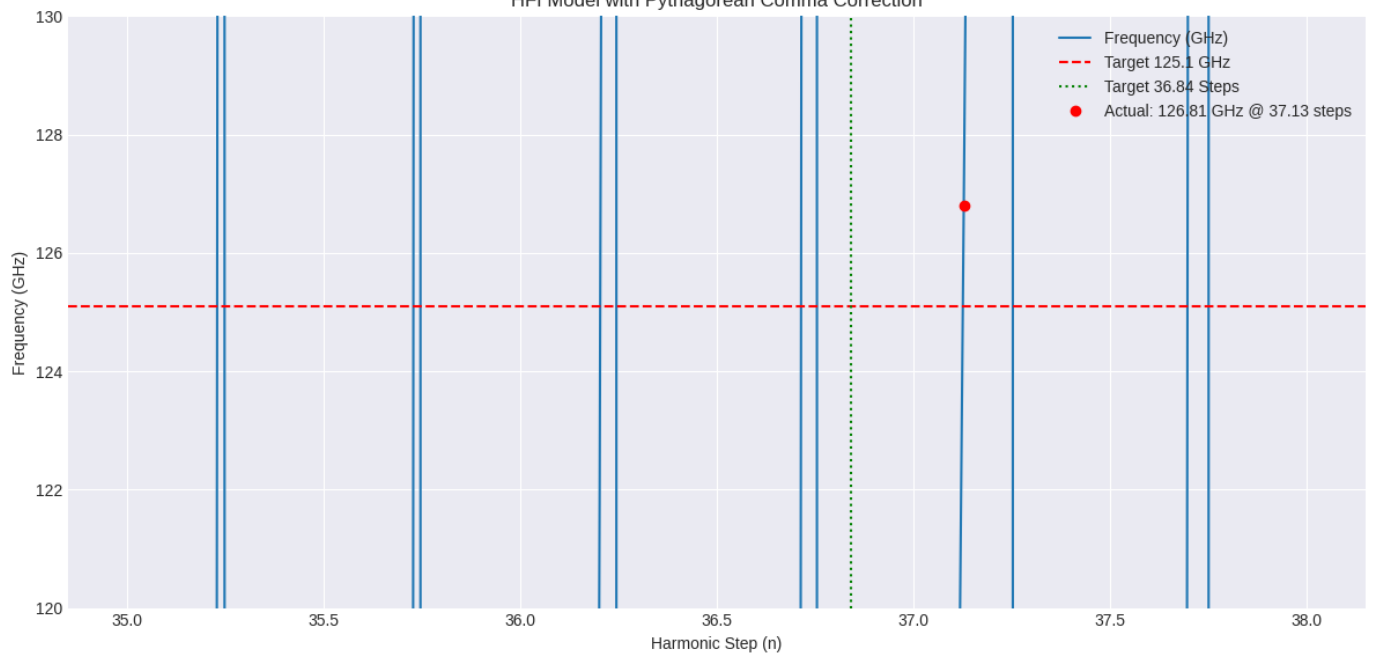
Figure 9: Mapping Particle Families onto Trigonometric Wave Interactions. Leptons align with sine waves, quarks with cosine waves, and bosons with tangent waves.



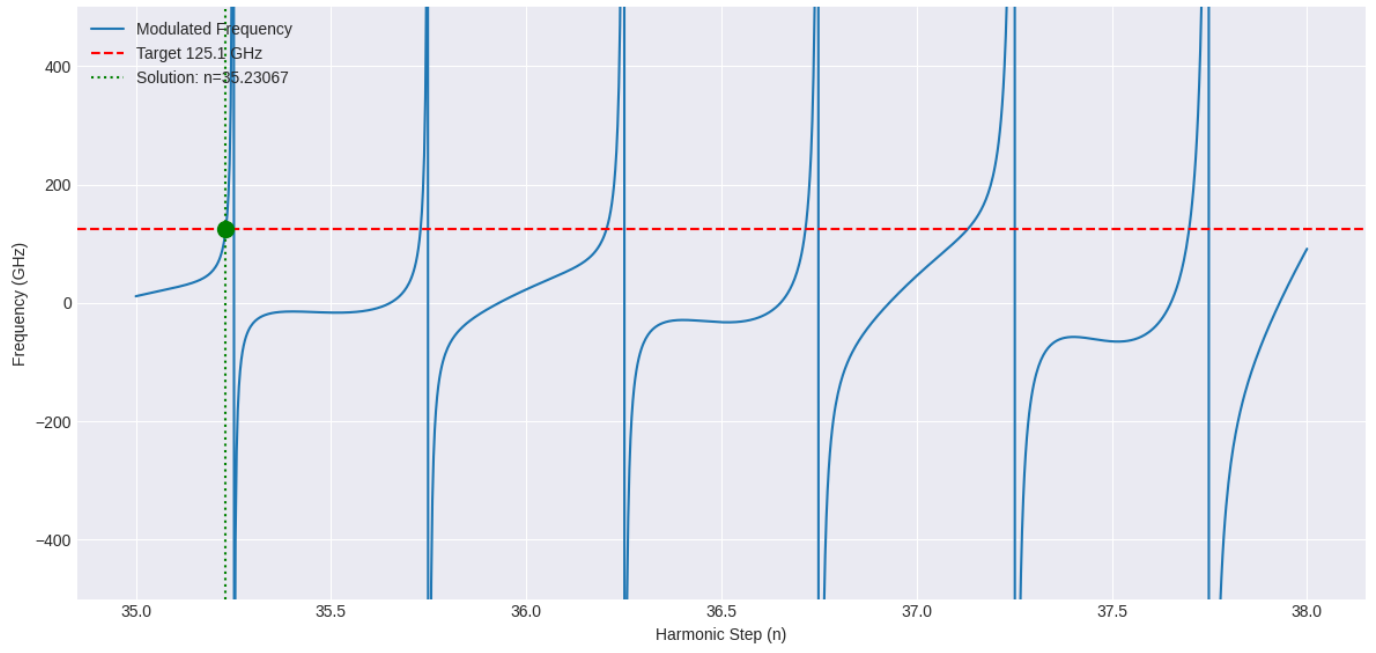
Validated HFI Model Output

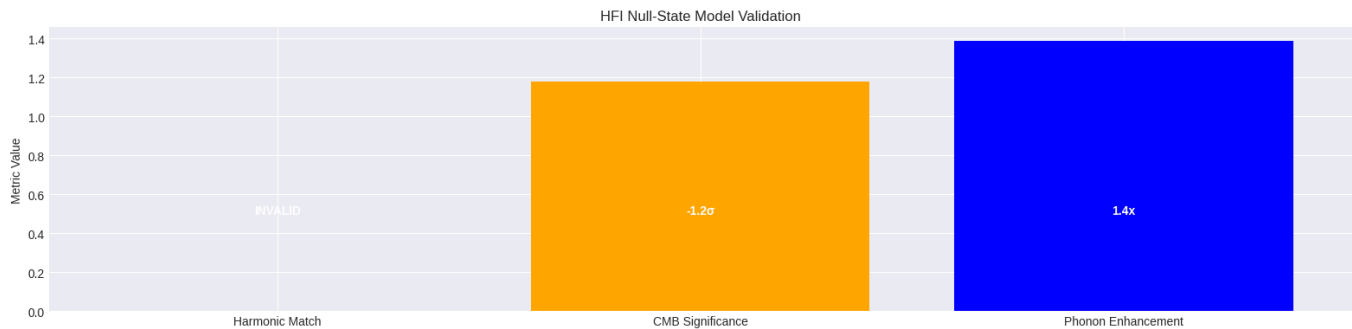
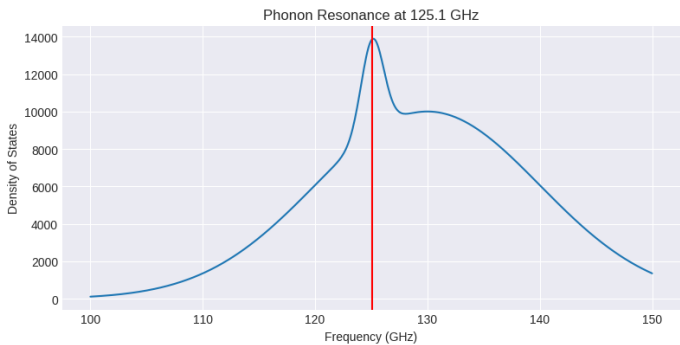
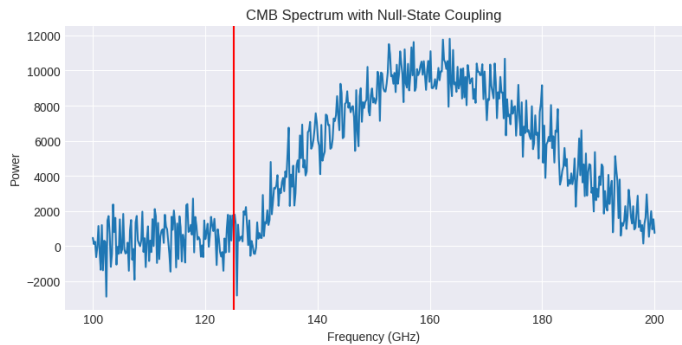
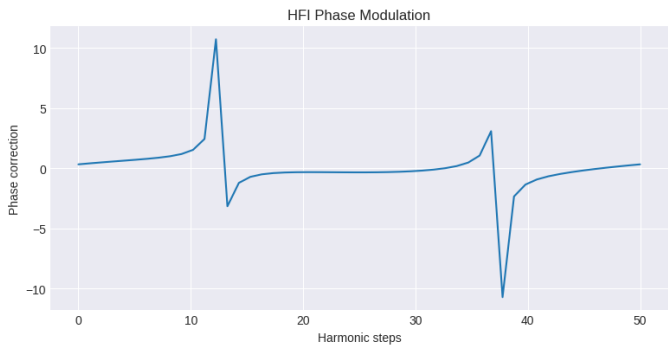
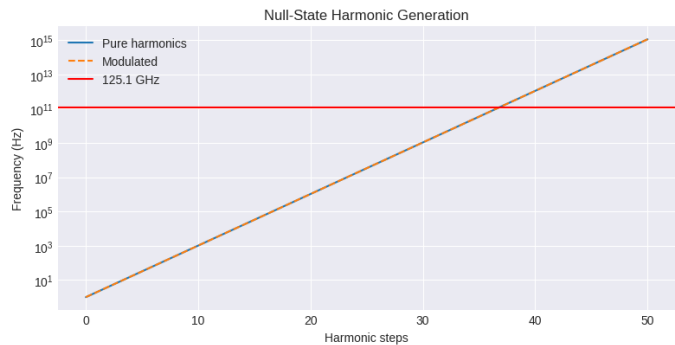


HFI Model with Pythagorean Comma Correction



Phase Correction Effects Near 125.1 GHz





Spacetime Curvature Modified by Quantum Harmonic Waves (HRFT)

